

Product datasheet for **TA343050**

Heparanase 1 (HPSE) Rabbit Polyclonal Antibody

Product data:

Product Type:	Primary Antibodies
Applications:	WB
Recommended Dilution:	WB
Reactivity:	Human
Host:	Rabbit
Isotype:	IgG
Clonality:	Polyclonal
Immunogen:	The immunogen for anti-HPSE antibody: synthetic peptide directed towards the N terminal of human HPSE. Synthetic peptide located within the following region: DPRFLILLGSPKLRTLARGLSPAYLRFGGTKTDFLIFDPKKESTFEERSY
Formulation:	Liquid. Purified antibody supplied in 1x PBS buffer with 0.09% (w/v) sodium azide and 2% sucrose. <i>Note that this product is shipped as lyophilized powder to China customers.</i>
Conjugation:	Unconjugated
Storage:	Store at -20°C as received.
Stability:	Stable for 12 months from date of receipt.
Predicted Protein Size:	61 kDa
Gene Name:	heparanase
Database Link:	NP_006656 Entrez Gene 10855 Human Q9Y251
Background:	Heparan sulfate proteoglycans (HSPGs) are major components of the basement membrane and extracellular matrix. Heparanases, like HPSE, are endoglycosidases that cleave the heparan sulfate side chain of HSPGs to permit the remodeling of the extracellular matrix for cell movement or the release of bioactive molecules from the extracellular matrix or cell surface.
Synonyms:	HPA; HPA1; HPR1; HPSE1; HSE1



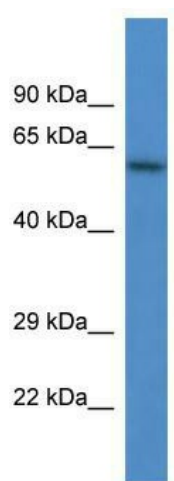
[View online »](#)

Note: Immunogen Sequence Homology: Horse: 100%; Human: 100%; Pig: 93%; Guinea pig: 93%; Dog: 86%; Rat: 86%; Bovine: 86%; Rabbit: 86%; Mouse: 79%

Protein Families: Secreted Protein

Protein Pathways: Glycosaminoglycan degradation, Metabolic pathways

Product images:



WB Suggested Anti-HPSE Antibody; Titration: 1.0 ug/ml; Positive Control: Jurkat Whole Cell