

Product datasheet for **TA342803**

alpha Adaptin (AP2A2) Rabbit Polyclonal Antibody

Product data:

Product Type:	Primary Antibodies
Applications:	WB
Recommended Dilution:	WB
Reactivity:	Human
Host:	Rabbit
Isotype:	IgG
Clonality:	Polyclonal
Immunogen:	The immunogen for anti-AP2A2 antibody: synthetic peptide directed towards the C terminal of human AP2A2. Synthetic peptide located within the following region: LAKLKKKKGPSTVTDLEDTKRDRSVDVNGGPEPAPASTSAVSTPSPSADL
Formulation:	Liquid. Purified antibody supplied in 1x PBS buffer with 0.09% (w/v) sodium azide and 2% sucrose. <i>Note that this product is shipped as lyophilized powder to China customers.</i>
Conjugation:	Unconjugated
Storage:	Store at -20°C as received.
Stability:	Stable for 12 months from date of receipt.
Predicted Protein Size:	104 kDa
Gene Name:	adaptor related protein complex 2 alpha 2 subunit
Database Link:	NP_036437 Entrez Gene 161 Human O94973



[View online »](#)

Background:

AP2A2 is a component of the adaptor protein complex 2 (AP-2). AP-2 is involved in clathrin-dependent endocytosis in which cargo proteins are incorporated into vesicles surrounded by clathrin (clathrin-coated vesicles, CCVs) which are destined for fusion with the early endosome. AP-2 also serves as a cargo receptor to selectively sort the membrane proteins involved in receptor-mediated endocytosis. AP-2 seems to play a role in the recycling of synaptic vesicle membranes from the presynaptic surface. AP-2 recognizes Y-X-X-[FILMV] (Y-X-X-Phi) and [ED]-X-X-X-L-[LI] endocytosis signal motifs within the cytosolic tails of transmembrane cargo molecules. AP-2 may also play a role in maintaining normal post-endocytic trafficking through the ARF6-regulated, non-clathrin pathway. The AP-2 alpha subunit binds polyphosphoinositide-containing lipids, positioning AP-2 on the membrane. The AP-2 alpha subunit acts via its C-terminal appendage domain as a scaffolding platform for endocytic accessory proteins. The AP-2 alpha and AP-2 sigma subunits are thought to contribute to the recognition of the [ED]-X-X-X-L-[LI] motif .

Synonyms:

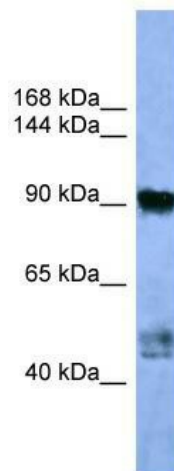
ADTAB; CLAPA2; HIP-9; HIP9; HYPJ

Note:

Immunogen Sequence Homology: Human: 100%; Dog: 79%; Pig: 79%; Rat: 79%; Mouse: 79%; Guinea pig: 79%

Protein Pathways:

Endocytosis, Huntington's disease

Product images:

WB Suggested Anti-AP2A2 Antibody Titration: 0.2-1 ug/ml; ELISA Titer: 1:62500; Positive Control: Human Lung