

Product datasheet for **TA342500**

GLYCTK Rabbit Polyclonal Antibody

Product data:

| | |
|-------------------------|---|
| Product Type: | Primary Antibodies |
| Applications: | WB |
| Recommended Dilution: | WB |
| Reactivity: | Human |
| Host: | Rabbit |
| Isotype: | IgG |
| Clonality: | Polyclonal |
| Immunogen: | The immunogen for anti-GLYCTK antibody: synthetic peptide directed towards the middle region of human GLYCTK. Synthetic peptide located within the following region: KPHSRVQVFEGAEDNLPDRDALRAALAIQQLAEGLTADDLLLVLISGGGS |
| Formulation: | Liquid. Purified antibody supplied in 1x PBS buffer with 0.09% (w/v) sodium azide and 2% sucrose. <i>Note that this product is shipped as lyophilized powder to China customers.</i> |
| Conjugation: | Unconjugated |
| Storage: | Store at -20°C as received. |
| Stability: | Stable for 12 months from date of receipt. |
| Predicted Protein Size: | 55 kDa |
| Gene Name: | glycerate kinase |
| Database Link: | NP_660305 Entrez Gene 132158 Human Q8IVS8 |
| Background: | This locus encodes a member of the glycerate kinase type-2 family. The encoded enzyme catalyzes the phosphorylation of (R)-glycerate and may be involved in serine degradation and fructose metabolism. Decreased activity of the encoded enzyme may be associated with the disease D-glyceric aciduria. Alternatively spliced transcript variants have been described. [provided by RefSeq, Jan 2009] |
| Synonyms: | HBeAgBP4A; HBEBP2; HBEBP4 |



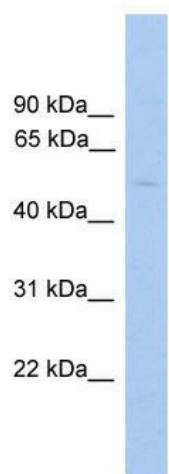
[View online »](#)

Note: Immunogen Sequence Homology: Dog: 100%; Pig: 100%; Rat: 100%; Horse: 100%; Human: 100%; Mouse: 100%; Bovine: 100%; Guinea pig: 100%; Rabbit: 93%; Yeast: 82%

Protein Families: Transcription Factors

Protein Pathways: Glycerolipid metabolism, Glycine, serine and threonine metabolism, Glyoxylate and dicarboxylate metabolism, Metabolic pathways

Product images:



WB Suggested Anti-GLYCTK Antibody Titration:
0.2-1 ug/ml; ELISA Titer: 1: 12500; Positive
Control: PANC1 cell lysate