

Product datasheet for **TA342499**

GLYCTK Rabbit Polyclonal Antibody

Product data:

Product Type:	Primary Antibodies
Applications:	WB
Recommended Dilution:	WB
Reactivity:	Human
Host:	Rabbit
Isotype:	IgG
Clonality:	Polyclonal
Immunogen:	The immunogen for anti-GLYCTK antibody: synthetic peptide directed towards the N terminal of human GLYCTK. Synthetic peptide located within the following region: IQQLAEGLTADLLLLVLISGGGSALLPAPIPPVTLEEKQTLRLLAARGA
Formulation:	Liquid. Purified antibody supplied in 1x PBS buffer with 0.09% (w/v) sodium azide and 2% sucrose. <i>Note that this product is shipped as lyophilized powder to China customers.</i>
Conjugation:	Unconjugated
Storage:	Store at -20°C as received.
Stability:	Stable for 12 months from date of receipt.
Predicted Protein Size:	55 kDa
Gene Name:	glycerate kinase
Database Link:	NP_660305 Entrez Gene 132158 Human Q8IVS8
Background:	This locus encodes a member of the glycerate kinase type-2 family. The encoded enzyme catalyzes the phosphorylation of (R)-glycerate and may be involved in serine degradation and fructose metabolism. Decreased activity of the encoded enzyme may be associated with the disease D-glyceric aciduria. Alternatively spliced transcript variants have been described. [provided by RefSeq, Jan 2009]
Synonyms:	HBeAgBP4A; HBEBP2; HBEBP4



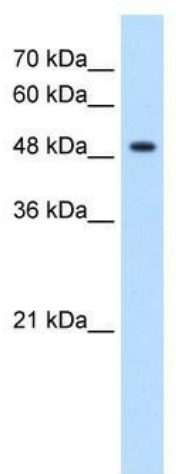
[View online »](#)

Note: Immunogen Sequence Homology: Dog: 100%; Pig: 100%; Rat: 100%; Horse: 100%; Human: 100%; Mouse: 100%; Bovine: 100%; Rabbit: 100%; Guinea pig: 100%

Protein Families: Transcription Factors

Protein Pathways: Glycerolipid metabolism, Glycine, serine and threonine metabolism, Glyoxylate and dicarboxylate metabolism, Metabolic pathways

Product images:



WB Suggested Anti-GLYCTK Antibody Titration:
1.25 ug/ml; Positive Control: HepG2 cell lysate