

## Product datasheet for **TA342289**

### Spi1 Rabbit Polyclonal Antibody

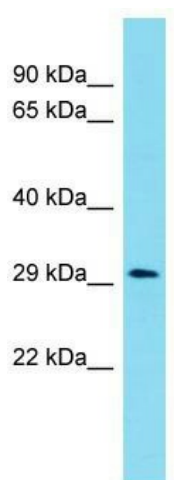
#### Product data:

Product Type:	Primary Antibodies
Applications:	WB
Recommended Dilution:	WB
Reactivity:	Mouse
Host:	Rabbit
Isotype:	IgG
Clonality:	Polyclonal
Immunogen:	The immunogen for anti-Sfpi1 antibody is: synthetic peptide directed towards the N-terminal region of Mouse Sfpi1. Synthetic peptide located within the following region: MLQACKMEGFSLTAPPSDDLVTYDSELYQRPMHDYYSFVGS DGESHS DHY
Formulation:	Liquid. Purified antibody supplied in 1x PBS buffer with 0.09% (w/v) sodium azide and 2% sucrose. <i>Note that this product is shipped as lyophilized powder to China customers.</i>
Conjugation:	Unconjugated
Storage:	Store at -20°C as received.
Stability:	Stable for 12 months from date of receipt.
Predicted Protein Size:	31 kDa
Gene Name:	spleen focus forming virus (SFFV) proviral integration oncogene
Database Link:	<a href="#">NP_035485</a> <a href="#">Entrez Gene 20375 Mouse P17433</a>
Background:	Sfpi1 binds to the PU-box, a purine-rich DNA sequence (5'-GAGGAA-3') that can act as a lymphoid-specific enhancer. This protein is a transcriptional activator that may be specifically involved in the differentiation or activation of macrophages or B-cells. It also binds RNA and may modulate pre-mRNA splicing.
Synonyms:	OF; PU.1; SFPI1; SPI-1; SPI-A
Note:	Immunogen Sequence Homology: Mouse: 100%; Rat: 79%



[View online »](#)

## Product images:



Host: Rabbit; Target Name: Sfp1; Sample Tissue: Mouse Testis lysates; Antibody Dilution: 1.0 ug/ml