

Product datasheet for **TA342238**

Cyclophilin 40 (PPID) Rabbit Polyclonal Antibody

Product data:

Product Type:	Primary Antibodies
Applications:	WB
Recommended Dilution:	WB
Reactivity:	Human
Host:	Rabbit
Isotype:	IgG
Clonality:	Polyclonal
Immunogen:	The immunogen for anti-PPID antibody: synthetic peptide directed towards the middle region of human PPID. Synthetic peptide located within the following region: AECGELKEGDDGGIFPKDGS GD SHPDFEDADIDLKDV D KILLIT ED LKN
Formulation:	Liquid. Purified antibody supplied in 1x PBS buffer with 0.09% (w/v) sodium azide and 2% sucrose. <i>Note that this product is shipped as lyophilized powder to China customers.</i>
Concentration:	lot specific
Purification:	Affinity Purified
Conjugation:	Unconjugated
Storage:	Store at -20°C as received.
Stability:	Stable for 12 months from date of receipt.
Predicted Protein Size:	41 kDa
Gene Name:	peptidylprolyl isomerase D
Database Link:	NP_005029 Entrez Gene 5481 Human Q08752
Background:	The protein encoded by this gene is a member of the peptidyl-prolyl cis-trans isomerase (PPIase) family. PPIases catalyze the cis-trans isomerization of proline imidic peptide bonds in oligopeptides and accelerate the folding of proteins. This protein has been shown to possess PPIase activity and, similar to other family members, can bind to the immunosuppressant cyclosporin A. [provided by RefSeq, Jul 2008]



[View online »](#)

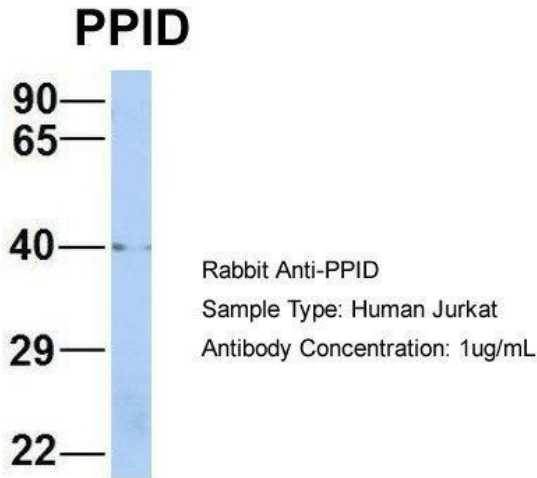
Synonyms: CYP-40; CYPD

Note: Immunogen Sequence Homology: Pig: 100%; Rat: 100%; Horse: 100%; Human: 100%; Mouse: 100%; Bovine: 100%; Rabbit: 100%; Dog: 93%; Guinea pig: 93%; Zebrafish: 83%

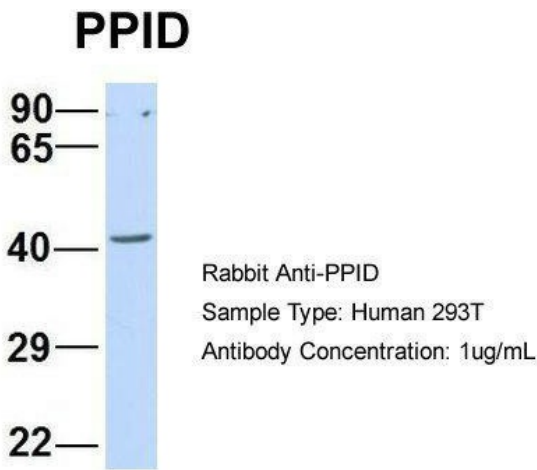
Protein Families: Stem cell - Pluripotency

Protein Pathways: Calcium signaling pathway, Huntington's disease, Parkinson's disease

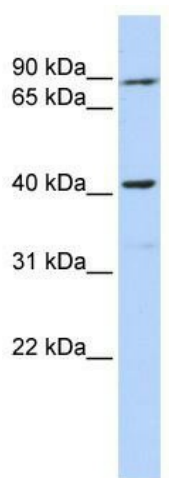
Product images:



Host: Rabbit; Target Name: PPID; Sample Tissue: Human Jurkat; Antibody Dilution: 1.0 ug/ml; PPID is strongly supported by BioGPS gene expression data to be expressed in Jurkat



Host: Rabbit; Target Name: PPID; Sample Tissue: Human 293T; Antibody Dilution: 1.0 ug/ml



WB Suggested Anti-PPID Antibody Titration: 0.2-1 ug/ml; ELISA Titer: 1:312500; Positive Control: 721_B cell lysate. PPID is strongly supported by BioGPS gene expression data to be expressed in Human 721_B cells