

Product datasheet for **TA342208**

SH3GL2 Rabbit Polyclonal Antibody

Product data:

Product Type:	Primary Antibodies
Applications:	WB
Recommended Dilution:	WB
Reactivity:	Human, Mouse
Host:	Rabbit
Isotype:	IgG
Clonality:	Polyclonal
Immunogen:	The immunogen for anti-SH3GL2 antibody: synthetic peptide directed towards the middle region of human SH3GL2. Synthetic peptide located within the following region: PRREYQPKPRMSLEFPTGDSTQPNGGLSHTGTPKPSGVQMDQPCCRALYD
Formulation:	Liquid. Purified antibody supplied in 1x PBS buffer with 0.09% (w/v) sodium azide and 2% sucrose. <i>Note that this product is shipped as lyophilized powder to China customers.</i>
Concentration:	lot specific
Purification:	Affinity Purified
Conjugation:	Unconjugated
Storage:	Store at -20°C as received.
Stability:	Stable for 12 months from date of receipt.
Predicted Protein Size:	40 kDa
Gene Name:	SH3 domain containing GRB2 like 2, endophilin A1
Database Link:	NP_003017 Entrez Gene 20404 Mouse Entrez Gene 6456 Human Q99962
Background:	Implicated in synaptic vesicle endocytosis. May recruit other proteins to membranes with high curvature.
Synonyms:	CNSA2; EEN-B1; SH3D2A; SH3P4

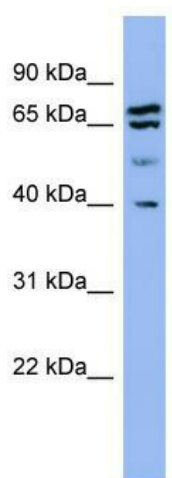


[View online »](#)

Note: Immunogen Sequence Homology: Dog: 100%; Pig: 100%; Horse: 100%; Human: 100%; Mouse: 100%; Bovine: 100%; Guinea pig: 100%; Rat: 93%; Rabbit: 93%

Protein Pathways: Endocytosis

Product images:



WB Suggested Anti-SH3GL2 Antibody Titration:
0.2-1 ug/ml; ELISA Titer: 1:1562500; Positive
Control: HeLa cell lysate SH3GL2 is supported by
BioGPS gene expression data to be expressed in
HeLa