

Product datasheet for **TA342041**

PIGV Rabbit Polyclonal Antibody

Product data:

Product Type:	Primary Antibodies
Applications:	IHC, WB
Recommended Dilution:	WB, IHC
Reactivity:	Human
Host:	Rabbit
Isotype:	IgG
Clonality:	Polyclonal
Immunogen:	The immunogen for anti-PIGV antibody: synthetic peptide directed towards the N terminal of human PIGV. Synthetic peptide located within the following region: FVDQLVEGLLGGLSHWDAEHFLFIAEHGYLYEHNFAFFPGFPLALLVGTE
Formulation:	Liquid. Purified antibody supplied in 1x PBS buffer with 0.09% (w/v) sodium azide and 2% sucrose. <i>Note that this product is shipped as lyophilized powder to China customers.</i>
Concentration:	lot specific
Conjugation:	Unconjugated
Storage:	Store at -20°C as received.
Stability:	Stable for 12 months from date of receipt.
Predicted Protein Size:	56 kDa
Gene Name:	phosphatidylinositol glycan anchor biosynthesis class V
Database Link:	NP_060307 Entrez Gene 55650 Human Q9NUD9



[View online »](#)

Background:

This gene encodes a mannosyltransferase enzyme involved in the biosynthesis of glycosylphosphatidylinositol (GPI). GPI is a complex glycolipid that functions as a membrane anchor for many proteins and plays a role in multiple cellular processes including protein sorting and signal transduction. The encoded protein is localized to the endoplasmic reticulum and transfers the second mannose to the GPI backbone. Mutations in this gene are associated with hyperphosphatasia mental retardation syndrome. Alternatively spliced transcript variants have been observed for this gene. [provided by RefSeq, Feb 2011]

Synonyms:

GPI-MT-II; HPMRS1; PIG-V

Note:

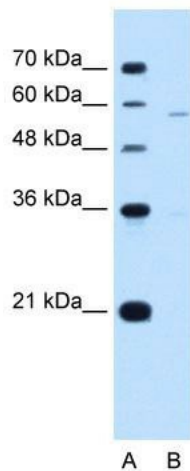
Immunogen Sequence Homology: Dog: 100%; Pig: 100%; Rat: 100%; Human: 100%; Mouse: 100%; Bovine: 100%; Rabbit: 100%; Guinea pig: 100%; Zebrafish: 86%

Protein Families:

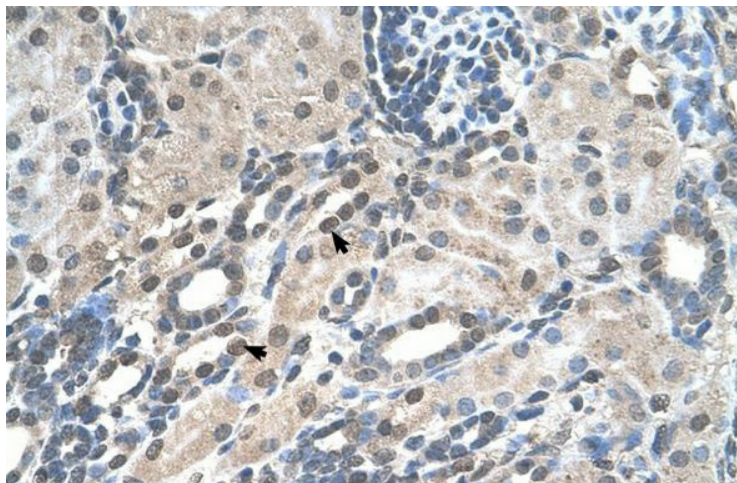
Transmembrane

Protein Pathways:

Glycosylphosphatidylinositol(GPI)-anchor biosynthesis, Metabolic pathways

Product images:


WB Suggested Anti-PIGV Antibody Titration: 5.0 ug/ml; Positive Control: Jurkat cell lysate



Human kidney