

Product datasheet for **TA341853**

PGRMC1 Rabbit Polyclonal Antibody

Product data:

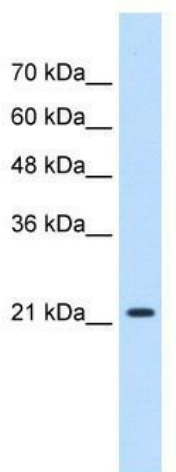
Product Type:	Primary Antibodies
Applications:	IHC, WB
Recommended Dilution:	WB, IHC
Reactivity:	Human
Host:	Rabbit
Isotype:	IgG
Clonality:	Polyclonal
Immunogen:	The immunogen for anti-PGRMC1 antibody: synthetic peptide directed towards the N terminal of human PGRMC1. Synthetic peptide located within the following region: MAAEDVATGADPSDLESGLLHEIFTSPNLNLLLGLCIFLLYKIVRGDQ
Formulation:	Liquid. Purified antibody supplied in 1x PBS buffer with 0.09% (w/v) sodium azide and 2% sucrose. <i>Note that this product is shipped as lyophilized powder to China customers.</i>
Concentration:	lot specific
Conjugation:	Unconjugated
Storage:	Store at -20°C as received.
Stability:	Stable for 12 months from date of receipt.
Predicted Protein Size:	22 kDa
Gene Name:	progesterone receptor membrane component 1
Database Link:	NP_006658 Entrez Gene 10857 Human O00264
Background:	This gene encodes a putative membrane-associated progesterone steroid receptor. The protein is expressed predominantly in the liver and kidney. [provided by RefSeq, Mar 2010]
Synonyms:	HPR6.6; MPR
Note:	Immunogen Sequence Homology: Human: 100%; Rat: 93%; Mouse: 93%; Dog: 86%; Pig: 86%; Horse: 86%; Rabbit: 86%; Bovine: 79%



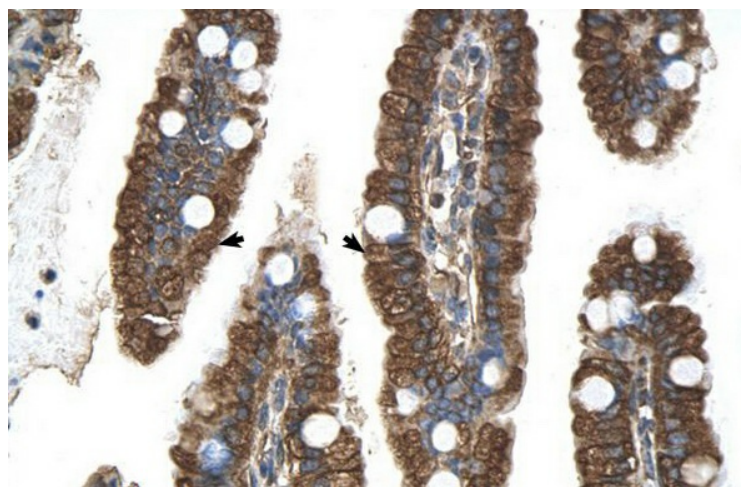
[View online »](#)

Protein Families: Druggable Genome, Nuclear Hormone Receptor, Transmembrane

Product images:



WB Suggested Anti-PGRMC1 Antibody Titration: 0.2-1 ug/ml; Positive Control: HepG2 cell lysate



Human Intestine