

Product datasheet for **TA341793**

Menin (MEN1) Rabbit Polyclonal Antibody

Product data:

Product Type:	Primary Antibodies
Applications:	WB
Recommended Dilution:	WB
Reactivity:	Mouse
Host:	Rabbit
Isotype:	IgG
Clonality:	Polyclonal
Immunogen:	The immunogen for anti-Men1 antibody: synthetic peptide corresponding to a region of Mouse. Synthetic peptide located within the following region: YNYCREDEEIIYKEFFEVDVNPVLLKEAASLLETGEERTGEQAQGTQGQ
Formulation:	Liquid. Purified antibody supplied in 1x PBS buffer with 0.09% (w/v) sodium azide and 2% sucrose. <i>Note that this product is shipped as lyophilized powder to China customers.</i>
Concentration:	lot specific
Conjugation:	Unconjugated
Storage:	Store at -20°C as received.
Stability:	Stable for 12 months from date of receipt.
Predicted Protein Size:	67 kDa
Gene Name:	menin 1
Database Link:	NP_570711 Entrez Gene 17283 Mouse O00255
Background:	Men1 may be involved in DNA repair. Men1 is a component of MLL-containing complexes (named MLL, ASCOM, MLL2/MLL3 or MLL3/MLL4 complex): at least composed ASH2L, RBBP5, DPY30, WDR5, one or several histone methyltransferases (MLL, MLL2, MLL3 and/or MLL4), and The facultative components MEN1, HCFC1, HCFC2, NCOA6, KDM6A, PAXIP1/PTIP and C16orf53/PA1.
Synonyms:	MEAI; SCG2

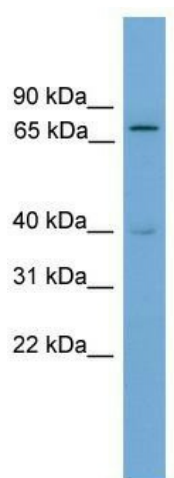


[View online »](#)

Note: Immunogen Sequence Homology: Mouse: 100%; Pig: 92%; Rat: 92%; Horse: 85%; Human: 85%; Bovine: 85%; Guinea pig: 85%

Protein Families: Druggable Genome, Transcription Factors

Product images:



WB Suggested Anti-Men1 Antibody Titration: 0.2-1 ug/ml; Positive Control: Mouse Muscle