

Product datasheet for **TA341596**

DDX41 Rabbit Polyclonal Antibody

Product data:

Product Type:	Primary Antibodies
Applications:	WB
Recommended Dilution:	WB
Reactivity:	Human
Host:	Rabbit
Isotype:	IgG
Clonality:	Polyclonal
Immunogen:	The immunogen for anti-DDX41 antibody: synthetic peptide directed towards the N terminal of human DDX41. Synthetic peptide located within the following region: RGDEDDIPLGPQSNVSLLDQHQLKEKAEARKESAKEKQLKEEEKILESV
Formulation:	Liquid. Purified antibody supplied in 1x PBS buffer with 0.09% (w/v) sodium azide and 2% sucrose. <i>Note that this product is shipped as lyophilized powder to China customers.</i>
Concentration:	lot specific
Conjugation:	Unconjugated
Storage:	Store at -20°C as received.
Stability:	Stable for 12 months from date of receipt.
Predicted Protein Size:	70 kDa
Gene Name:	DEAD-box helicase 41
Database Link:	NP_057306 Entrez Gene 51428 Human Q9UJV9



[View online »](#)

Background:

DEAD box proteins, characterized by the conserved motif Asp-Glu-Ala-Asp (DEAD), are putative RNA helicases. They are implicated in a number of cellular processes involving alteration of RNA secondary structure, such as translation initiation, nuclear and mitochondrial splicing, and ribosome and spliceosome assembly. Based on their distribution patterns, some members of the DEAD box protein family are believed to be involved in embryogenesis, spermatogenesis, and cellular growth and division. This gene encodes a member of this family. The function of this member has not been determined. Based on studies in *Drosophila*, the abstract gene is widely required during post-transcriptional gene expression. [provided by RefSeq, Jul 2008]

Synonyms:

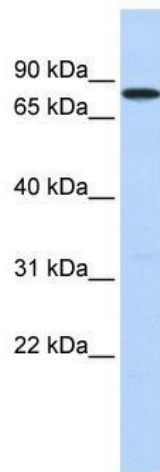
ABS

Note:

Immunogen Sequence Homology: Dog: 100%; Pig: 100%; Rat: 100%; Horse: 100%; Human: 100%; Mouse: 100%; Bovine: 100%; Rabbit: 100%; Zebrafish: 100%; Guinea pig: 100%

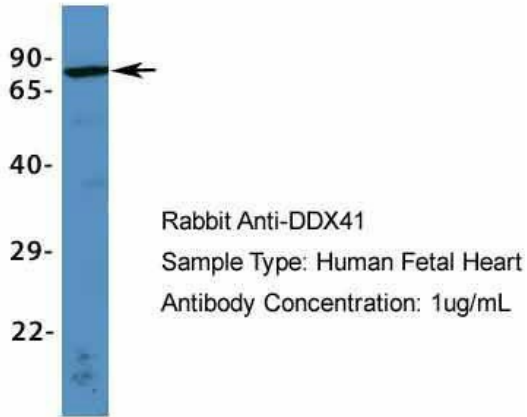
Protein Families:

Druggable Genome

Product images:

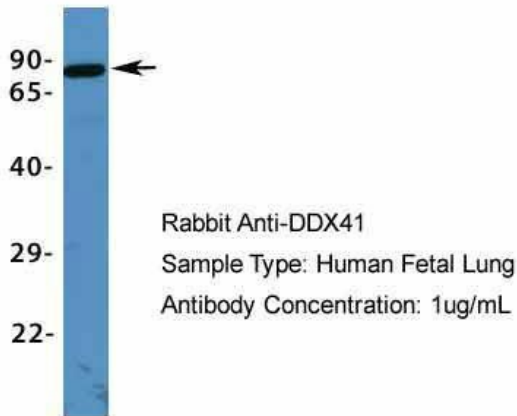
WB Suggested Anti-DDX41 Antibody Titration:
0.2-1 ug/ml; ELISA Titer: 1:312500; Positive
Control: Human Lung

DDX41



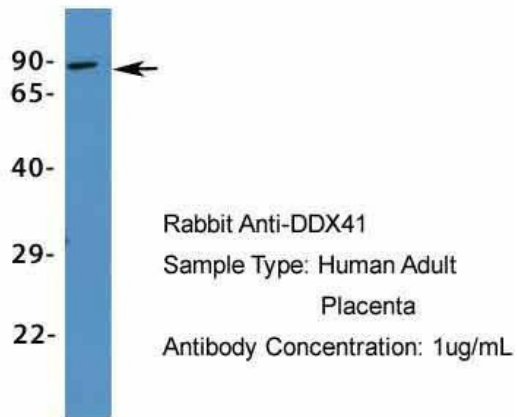
Host: Rabbit; Target Name: DDX41; Sample
Tissue: Human Fetal Heart; Antibody Dilution: 1.0
ug/ml

DDX41



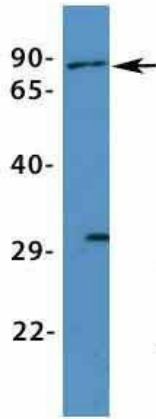
Host: Rabbit; Target Name: DDX41; Sample
Tissue: Human Fetal Lung; Antibody Dilution: 1.0
ug/ml

DDX41



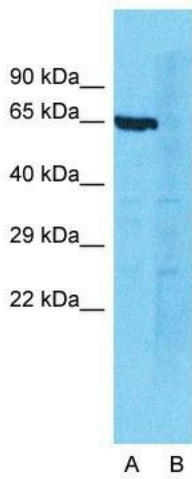
Host: Rabbit; Target Name: DDX41; Sample
Tissue: Human Adult Placenta; Antibody Dilution:
1.0 ug/ml

DDX41



Rabbit Anti-DDX41
 Sample Type: Human Fetal
 Muscle
 Antibody Concentration: 1ug/mL

Host: Rabbit; Target Name: DDX41; Sample
 Tissue: Human Fetal Muscle; Antibody Dilution:
 1.0 ug/ml



Anti-DDX41 Western Blot & Peptide Block Validation

Lysate: Jurkat Cell
 Lane A: Primary Antibody
 Lane B: Primary Antibody + Blocking Peptide
 Primary Antibody Concentration: 1.0µg/ml
 Peptide Concentration: 5.0µg/ml
 Lysate Quantity: 25µg/lane
 Gel Concentration: 12%

Host: Rabbit; Target Name: DDX41; Sample
 Tissue: Jurkat; Lane A: Primary Antibody; Lane B:
 Primary Antibody + Blocking Peptide ; Primary
 Antibody Concentration:1 ug/ml; Peptide
 Concentration: 5.0 ug/ml; Lysate Quantity:
 25ug/lane/lane; Gel Concentration: 12