

Product datasheet for **TA341325**

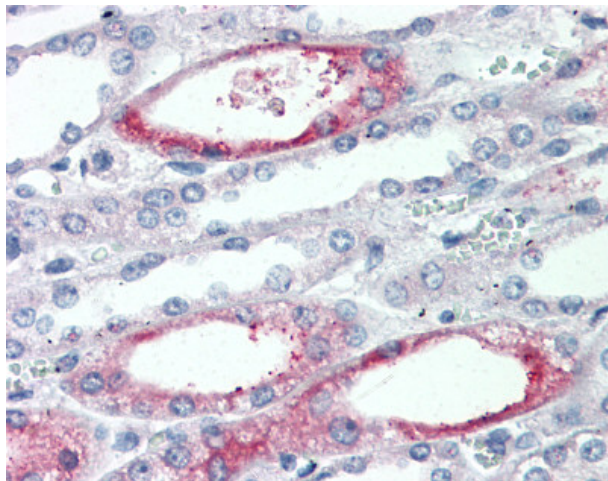
PIGR Rabbit Polyclonal Antibody

Product data:

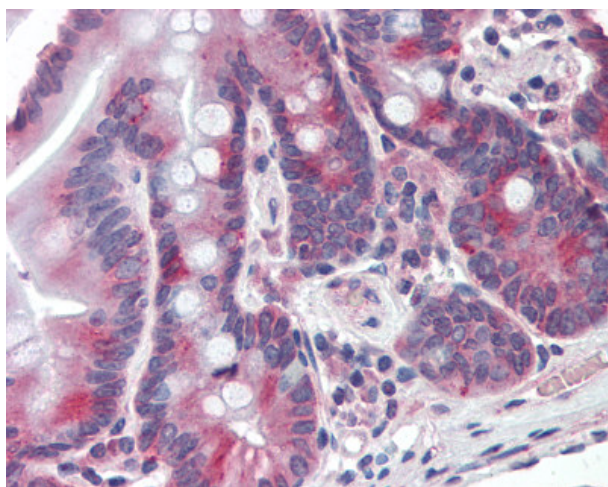
Product Type:	Primary Antibodies
Applications:	IHC
Recommended Dilution:	IHC-P (15 - 20 µg/ml)
Reactivity:	Human (Predicted: Monkey)
Host:	Rabbit
Clonality:	Polyclonal
Immunogen:	PIGR antibody was raised against synthetic 19 amino acid peptide from extracellular domain of human PIGR. Percent identity with other species by BLAST analysis: Human, Gorilla (100%); Gibbon, Monkey (95%); Orangutan, Marmoset (89%).
Formulation:	PBS, 0.1% sodium azide.
Concentration:	lot specific
Purification:	Immunoaffinity purified
Conjugation:	Unconjugated
Storage:	Store at -20°C as received.
Stability:	Stable for 12 months from date of receipt.
Gene Name:	polymeric immunoglobulin receptor
Database Link:	NP_002635 Entrez Gene 694638 Monkey Entrez Gene 5284 Human P01833
Synonyms:	FLJ22667; MGC125361; MGC125362
Protein Families:	Druggable Genome, Secreted Protein, Transmembrane



[View online »](#)

Product images:

Anti-PIGR antibody IHC of human kidney. Immunohistochemistry of formalin-fixed, paraffin-embedded tissue after heat-induced antigen retrieval.



Anti-PIGR antibody IHC of human small intestine. Immunohistochemistry of formalin-fixed, paraffin-embedded tissue after heat-induced antigen retrieval.