

Product datasheet for **TA341284**

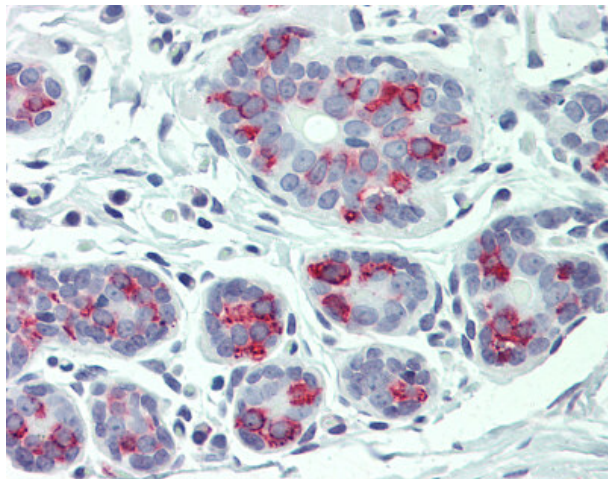
Integrin alpha 6 (ITGA6) Rabbit Polyclonal Antibody

Product data:

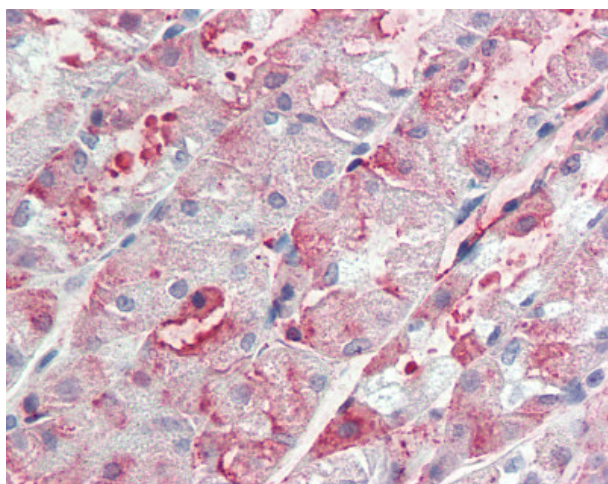
Product Type:	Primary Antibodies
Applications:	IHC
Recommended Dilution:	IHC-P (15 µg/ml)
Reactivity:	Human (Predicted: Monkey, Bat, Bovine, Pig)
Host:	Rabbit
Clonality:	Polyclonal
Immunogen:	ITGA6/Integrin Alpha 6/CD49f antibody was raised against synthetic 15 amino acid peptide from internal region of human ITGA6 / CD49f. Percent identity with other species by BLAST analysis: Human, Chimpanzee, Gorilla, Orangutan, Gibbon, Monkey, Horse (100%); Marmoset, Bovine, Bat, Pig (93%); Galago, Mouse, Opossum (87%); Rat, Hamster, Panda, Rabbit, Guinea pig (80%).
Formulation:	PBS, 0.1% sodium azide.
Concentration:	lot specific
Purification:	Immunoaffinity purified
Conjugation:	Unconjugated
Storage:	Store at -20°C as received.
Stability:	Stable for 12 months from date of receipt.
Gene Name:	integrin subunit alpha 6
Database Link:	NP_000201 Entrez Gene 697643 Monkey Entrez Gene 3655 Human P23229
Synonyms:	CD49f; ITGA6B; VLA-6
Protein Families:	Druggable Genome, ES Cell Differentiation/IPS, Transmembrane
Protein Pathways:	Arrhythmogenic right ventricular cardiomyopathy (ARVC), Cell adhesion molecules (CAMs), Dilated cardiomyopathy, ECM-receptor interaction, Focal adhesion, Hematopoietic cell lineage, Hypertrophic cardiomyopathy (HCM), Pathways in cancer, Regulation of actin cytoskeleton, Small cell lung cancer



[View online »](#)

Product images:

Anti-ITGA6 / CD49f antibody IHC of human breast. Immunohistochemistry of formalin-fixed, paraffin-embedded tissue after heat-induced antigen retrieval.



Anti-ITGA6 / CD49f antibody IHC of human stomach. Immunohistochemistry of formalin-fixed, paraffin-embedded tissue after heat-induced antigen retrieval.