

## Product datasheet for **TA341205**

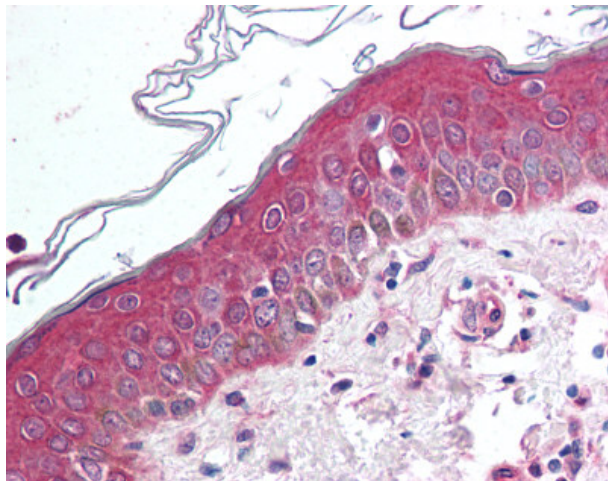
### WNT10B Rabbit Polyclonal Antibody

#### Product data:

Product Type:	Primary Antibodies
Applications:	IHC
Recommended Dilution:	IHC-P (10 - 15 µg/ml)
Reactivity:	Human (Predicted: Hamster)
Host:	Rabbit
Clonality:	Polyclonal
Immunogen:	WNT10B antibody was raised against synthetic 16 amino acid peptide from internal region of human WNT10B. Percent identity with other species by BLAST analysis: Human, Gorilla, Orangutan, Monkey, Marmoset, Mouse, Rat, Elephant, Dog, Bat, Horse, Rabbit, Pig (100%); Hamster (94%); Panda (88%).
Formulation:	PBS, 0.1% sodium azide.
Concentration:	lot specific
Purification:	Immunoaffinity purified
Conjugation:	Unconjugated
Storage:	Store at -20°C as received.
Stability:	Stable for 12 months from date of receipt.
Gene Name:	Wnt family member 10B
Database Link:	<a href="#">NP_003385</a> <a href="#">Entrez Gene 7480 Human</a> <a href="#">O00744</a>
Synonyms:	SHFM6; WNT-12
Protein Families:	Druggable Genome, Secreted Protein
Protein Pathways:	Basal cell carcinoma, Hedgehog signaling pathway, Melanogenesis, Pathways in cancer, Wnt signaling pathway



[View online »](#)

**Product images:**

Anti-WNT10B antibody IHC of human skin. Immunohistochemistry of formalin-fixed, paraffin-embedded tissue after heat-induced antigen retrieval.