

Product datasheet for **TA341130**

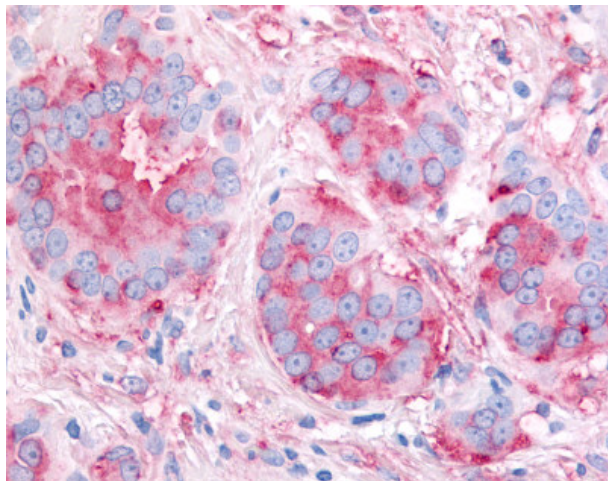
VEGF Receptor 2 (KDR) Rabbit Polyclonal Antibody

Product data:

Product Type:	Primary Antibodies
Applications:	IHC
Recommended Dilution:	IHC-P (2.5 µg/ml)
Reactivity:	Human (Predicted: Bat, Bovine, Hamster, Horse)
Host:	Rabbit
Clonality:	Polyclonal
Immunogen:	KDR / VEGFR2 antibody was raised against synthetic 15 amino acid peptide from internal region of human VEGFR2. Percent identity with other species by BLAST analysis: Human, Gorilla, Gibbon, Monkey, Marmoset, Dog (100%); Bovine, Bat, Hamster, Panda, Horse (93%); Mouse, Rat, Pig, Platypus (87%); Elephant, Opossum (80%).
Formulation:	PBS, 0.1% sodium azide.
Concentration:	lot specific
Purification:	Immunoaffinity purified
Conjugation:	Unconjugated
Storage:	Store at -20°C as received.
Stability:	Stable for 12 months from date of receipt.
Gene Name:	kinase insert domain receptor
Database Link:	NP_002244 Entrez Gene 3791 Human P35968
Synonyms:	CD309; FLK1; VEGFR; VEGFR2
Protein Families:	Druggable Genome, ES Cell Differentiation/IPS, Protein Kinase, Transmembrane
Protein Pathways:	Cytokine-cytokine receptor interaction, Endocytosis, Focal adhesion, VEGF signaling pathway



[View online »](#)

Product images:

Anti-KDR / VEGFR2 antibody IHC of human Breast, Carcinoma. Immunohistochemistry of formalin-fixed, paraffin-embedded tissue after heat-induced antigen retrieval.