

Product datasheet for **TA341129**

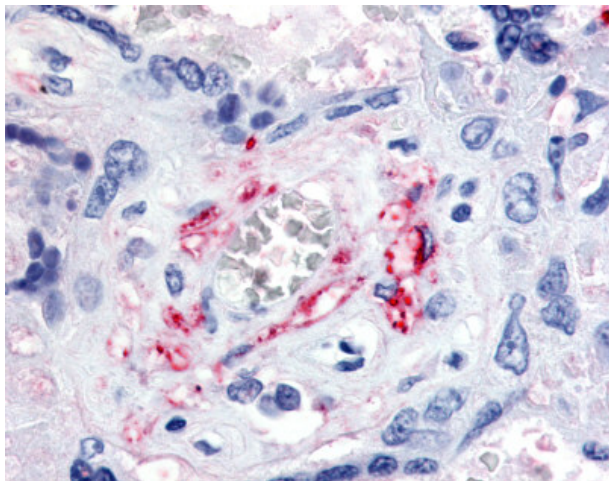
VEGF Receptor 1 (FLT1) Rabbit Polyclonal Antibody

Product data:

Product Type:	Primary Antibodies
Applications:	IHC
Recommended Dilution:	IHC-P (5 - 10 µg/ml)
Reactivity:	Human (Predicted: Monkey, Dog, Horse)
Host:	Rabbit
Clonality:	Polyclonal
Immunogen:	FLT1 / VEGFR1 antibody was raised against synthetic 15 amino acid peptide from N-terminus of human VEGFR1. Percent identity with other species by BLAST analysis: Human, Gorilla, Gibbon (100%); Monkey, Marmoset, Dog, Panda, Horse, Opossum (93%); Mouse, Rat, Platypus (87%); Bovine, Elephant, Rabbit (80%).
Formulation:	PBS, 0.1% sodium azide.
Concentration:	lot specific
Purification:	Immunoaffinity purified
Conjugation:	Unconjugated
Storage:	Store at -20°C as received.
Stability:	Stable for 12 months from date of receipt.
Gene Name:	fms related tyrosine kinase 1
Database Link:	NP_001153392 Entrez Gene 403727 Dog Entrez Gene 574133 Monkey Entrez Gene 2321 Human P17948
Synonyms:	FLT; FLT-1; VEGFR-1; VEGFR1
Protein Families:	Druggable Genome, Protein Kinase, Secreted Protein
Protein Pathways:	Cytokine-cytokine receptor interaction, Endocytosis, Focal adhesion



[View online »](#)

Product images:

Anti-VEGFR1 antibody IHC of human placenta, fetal capillary endothelial cells.
Immunohistochemistry of formalin-fixed, paraffin-embedded tissue after heat-induced antigen retrieval.