

Product datasheet for **TA341103**

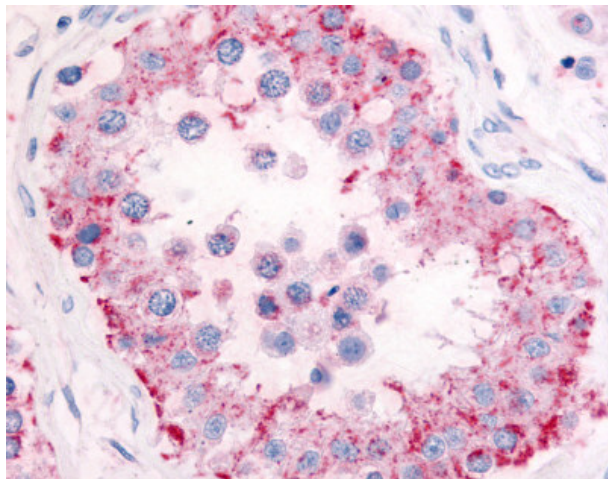
PDE11A Rabbit Polyclonal Antibody

Product data:

| | |
|-----------------------|--|
| Product Type: | Primary Antibodies |
| Applications: | IHC |
| Recommended Dilution: | IHC-P (5 µg/ml) |
| Reactivity: | Human (Predicted: Xenopus) |
| Host: | Rabbit |
| Clonality: | Polyclonal |
| Immunogen: | PDE11A antibody was raised against synthetic 17 amino acid peptide from internal region of human PDE11A. Percent identity with other species by BLAST analysis: Human, Gorilla, Gibbon, Monkey, Marmoset, Mouse, Rat, Bovine, Bat, Hamster, Elephant, Horse, Rabbit, Pig, Opossum, Turkey, Chicken, Pufferfish, Zebrafish (100%); Platypus, Xenopus, Stickleback (94%); Dog (88%). |
| Formulation: | PBS, 0.1% sodium azide. |
| Concentration: | lot specific |
| Purification: | Immunoaffinity purified |
| Conjugation: | Unconjugated |
| Storage: | Store at -20°C as received. |
| Stability: | Stable for 12 months from date of receipt. |
| Gene Name: | phosphodiesterase 11A |
| Database Link: | NP_058649 Entrez Gene 50940 Human Q9HCR9 |
| Synonyms: | PPNAD2 |
| Protein Families: | Druggable Genome |
| Protein Pathways: | Progesterone-mediated oocyte maturation, Purine metabolism |



[View online »](#)

Product images:

Anti-PDE11A antibody IHC of human testis. Immunohistochemistry of formalin-fixed, paraffin-embedded tissue after heat-induced antigen retrieval.