

## Product datasheet for **TA341079**

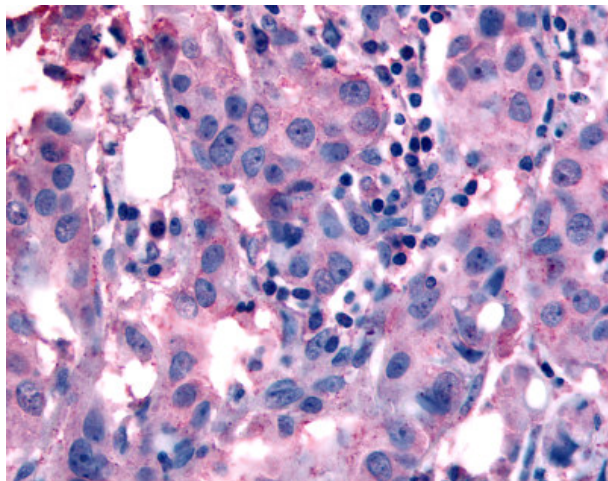
### NANP Rabbit Polyclonal Antibody

#### Product data:

Product Type:	Primary Antibodies
Applications:	IHC
Recommended Dilution:	IHC-P (10 - 15 µg/ml)
Reactivity:	Human (Predicted: Monkey, Bovine, Pig, Chicken)
Host:	Rabbit
Clonality:	Polyclonal
Immunogen:	NANP antibody was raised against synthetic 16 amino acid peptide from internal region of human NANP. Percent identity with other species by BLAST analysis: Human, Gorilla, Gibbon, Monkey, Mouse, Rat, Dog, Hamster, Panda, Rabbit (100%); Marmoset, Bovine, Elephant, Pig, Opossum, Turkey, Chicken, Platypus (94%); Bat (88%); Lizard (81%).
Formulation:	PBS, 0.1% sodium azide.
Concentration:	lot specific
Purification:	Immunoaffinity purified
Conjugation:	Unconjugated
Storage:	Store at -20°C as received.
Stability:	Stable for 12 months from date of receipt.
Gene Name:	N-acetylneuraminic acid phosphatase
Database Link:	<a href="#">NP_689880</a> <a href="#">Entrez Gene 706491 Monkey</a> <a href="#">Entrez Gene 140838 Human</a> <a href="#">Q8TBE9</a>
Synonyms:	C20orf147; dJ694B14.3; HDHD4
Protein Pathways:	Amino sugar and nucleotide sugar metabolism, Metabolic pathways



[View online »](#)

**Product images:**

Anti-NANP antibody IHC of human Breast, Carcinoma. Immunohistochemistry of formalin-fixed, paraffin-embedded tissue after heat-induced antigen retrieval.