

Product datasheet for **TA341068**

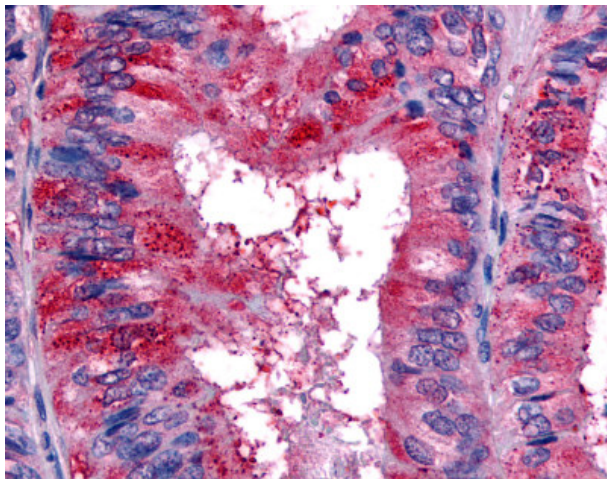
Eph receptor B2 (EPHB2) Rabbit Polyclonal Antibody

Product data:

Product Type:	Primary Antibodies
Applications:	IHC
Recommended Dilution:	IHC-P (7 µg/ml)
Reactivity:	Human (Predicted: Bovine, Hamster, Pig, Chicken)
Host:	Rabbit
Clonality:	Polyclonal
Immunogen:	EPHB2 / EPH Receptor B2 antibody was raised against synthetic 15 amino acid peptide from internal region of human EPHB2. Percent identity with other species by BLAST analysis: Human, Gorilla, Gibbon, Marmoset, Mouse, Rat, Panda, Rabbit, Opossum, Zebrafish (100%); Hamster, Elephant, Bovine, Pig, Turkey, Chicken, Pufferfish (93%); Xenopus, Seabass (87%); Stickleback (80%).
Formulation:	PBS, 0.1% sodium azide.
Concentration:	lot specific
Purification:	Immunoaffinity purified
Conjugation:	Unconjugated
Storage:	Store at -20°C as received.
Stability:	Stable for 12 months from date of receipt.
Gene Name:	EPH receptor B2
Database Link:	NP_004433 Entrez Gene 2048 Human P29323
Synonyms:	CAPB; DRT; EK5; EPHT3; ERK; Hek5; PCBC; Tyro5
Protein Families:	Druggable Genome, Protein Kinase, Transmembrane
Protein Pathways:	Axon guidance



[View online »](#)

Product images:

Anti-EPHB2 / EPH Receptor B2 antibody IHC of human Colon, Carcinoma.
Immunohistochemistry of formalin-fixed, paraffin-embedded tissue after heat-induced antigen retrieval.