

## Product datasheet for **TA340971**

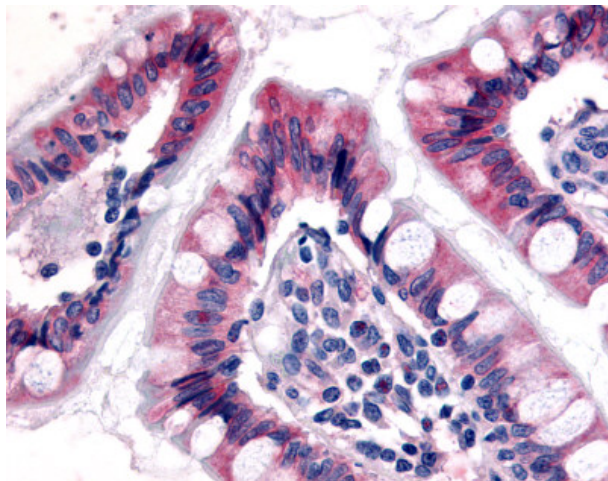
### Estrogen Related Receptor gamma (ESRRG) Rabbit Polyclonal Antibody

#### Product data:

Product Type:	Primary Antibodies
Applications:	IHC
Recommended Dilution:	IHC-P (5 µg/ml)
Reactivity:	Human (Predicted: Chicken, Xenopus)
Host:	Rabbit
Clonality:	Polyclonal
Immunogen:	ESRRG / ERR Gamma antibody was raised against synthetic 14 amino acid peptide from N-terminus of human ESRRG / ERR3. Percent identity with other species by BLAST analysis: Human, Gorilla, Orangutan, Gibbon, Monkey, Marmoset, Mouse, Rat, Hamster, Elephant, Panda, Bovine, Dog, Bat, Horse, Rabbit (100%); Opossum, Turkey, Chicken, Platypus, Lizard, Xenopus (93%); Zebrafish (86%).
Formulation:	PBS, 0.1% sodium azide.
Concentration:	lot specific
Purification:	Immunoaffinity purified
Conjugation:	Unconjugated
Storage:	Store at -20°C as received.
Stability:	Stable for 12 months from date of receipt.
Gene Name:	estrogen related receptor gamma
Database Link:	<a href="#">NP_001429</a> <a href="#">Entrez Gene 2104 Human P62508</a>
Synonyms:	ERR3; ERRgamma; NR3B3
Protein Families:	Druggable Genome, Nuclear Hormone Receptor, Transcription Factors



[View online »](#)

**Product images:**

Anti-ESRRG / ERR3 antibody IHC of human small intestine. Immunohistochemistry of formalin-fixed, paraffin-embedded tissue after heat-induced antigen retrieval.