

Product datasheet for **TA340968**

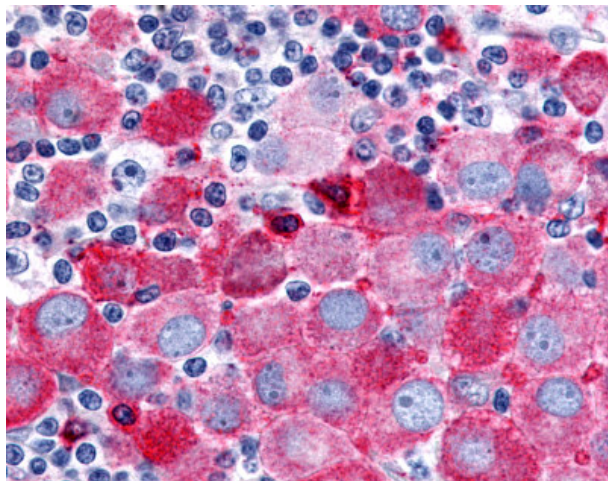
PSGR (OR51E2) Rabbit Polyclonal Antibody

Product data:

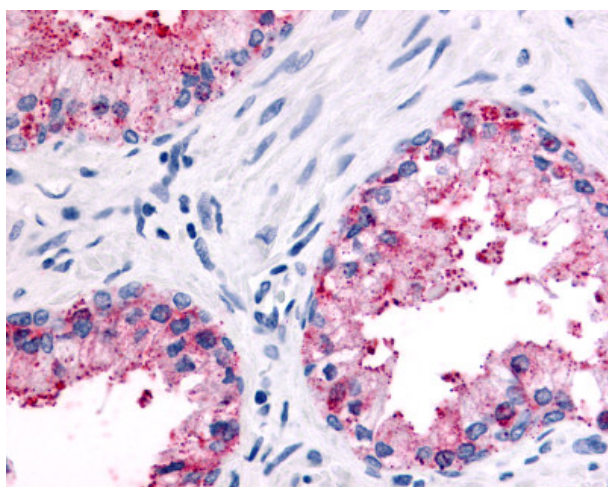
Product Type:	Primary Antibodies
Applications:	IHC
Recommended Dilution:	IHC-P (16 µg/ml)
Reactivity:	Human (Predicted: Mouse, Rat, Bovine)
Host:	Rabbit
Clonality:	Polyclonal
Immunogen:	OR51E2 / PSGR antibody was raised against synthetic 14 amino acid peptide from N-terminal extracellular domain of human OR51E2. Percent identity with other species by BLAST analysis: Human, Gorilla, Gibbon, Monkey, Galago, Marmoset, Hamster, Bat, Rabbit, Pig (100%); Mouse, Rat, Elephant, Panda, Bovine (93%); Horse (86%).
Formulation:	PBS, 0.1% sodium azide.
Concentration:	lot specific
Purification:	Immunoaffinity purified
Conjugation:	Unconjugated
Storage:	Store at -20°C as received.
Stability:	Stable for 12 months from date of receipt.
Gene Name:	olfactory receptor family 51 subfamily E member 2
Database Link:	NP_110401 Entrez Gene 81285 Human Q9H255
Synonyms:	OR51E3P; OR52A2; PSGR
Protein Families:	Druggable Genome, GPCR, Transmembrane
Protein Pathways:	Olfactory transduction



[View online »](#)

Product images:

Anti-OR51E2 / PSGR antibody IHC of human Skin, Melanoma. Immunohistochemistry of formalin-fixed, paraffin-embedded tissue after heat-induced antigen retrieval.



Anti-OR51E2 antibody IHC of human prostate, epithelium. Immunohistochemistry of formalin-fixed, paraffin-embedded tissue after heat-induced antigen retrieval.