

Product datasheet for **TA340897**

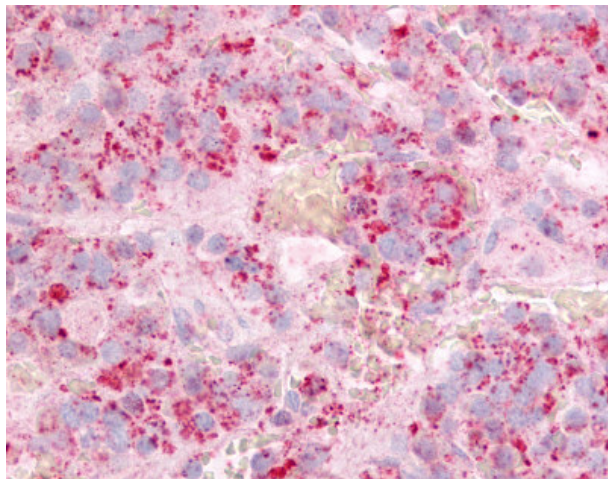
GPR12 Rabbit Polyclonal Antibody

Product data:

Product Type:	Primary Antibodies
Applications:	IHC
Recommended Dilution:	IHC-P (10 µg/ml)
Reactivity:	Human (Predicted: Bat, Rabbit)
Host:	Rabbit
Clonality:	Polyclonal
Immunogen:	GPR12 antibody was raised against synthetic 16 amino acid peptide from 1st extracellular domain of human GPR12 / GPCR12. Percent identity with other species by BLAST analysis: Human, Gorilla, Gibbon, Monkey, Marmoset, Mouse, Rat, Dog, Bovine, Hamster, Panda, Horse, Pig, Opossum (100%); Bat, Elephant, Rabbit (94%); Turkey, Chicken (88%); Platypus, Xenopus (81%).
Formulation:	PBS, 0.1% sodium azide.
Concentration:	lot specific
Purification:	Immunoaffinity purified
Conjugation:	Unconjugated
Storage:	Store at -20°C as received.
Stability:	Stable for 12 months from date of receipt.
Gene Name:	G protein-coupled receptor 12
Database Link:	NP_005279 Entrez Gene 2835 Human P47775
Synonyms:	GPCR12; GPCR21; PPP1R84
Protein Families:	Druggable Genome, GPCR, Transmembrane



[View online »](#)

Product images:

Anti-GPR12 / GPCR12 antibody IHC of human anterior pituitary. Immunohistochemistry of formalin-fixed, paraffin-embedded tissue after heat-induced antigen retrieval.