

Product datasheet for **TA340854**

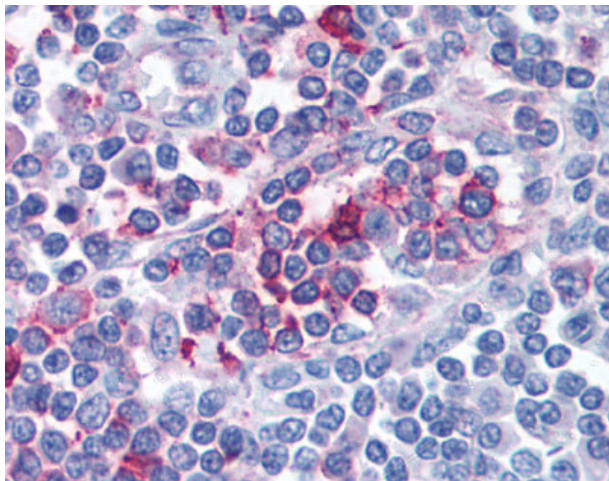
FPR1 Rabbit Polyclonal Antibody

Product data:

| | |
|-----------------------|---|
| Product Type: | Primary Antibodies |
| Applications: | IHC |
| Recommended Dilution: | IHC-P (10 µg/ml) |
| Reactivity: | Human (Predicted: Monkey) |
| Host: | Rabbit |
| Clonality: | Polyclonal |
| Immunogen: | FPR1 / FPR antibody was raised against synthetic 16 amino acid peptide from C-terminal cytoplasmic domain of human FPR1. Percent identity with other species by BLAST analysis: Human, Chimpanzee, Gorilla, Orangutan (100%); Gibbon, Monkey (94%). |
| Formulation: | PBS, 0.1% sodium azide. |
| Concentration: | lot specific |
| Purification: | Immunoaffinity purified |
| Conjugation: | Unconjugated |
| Storage: | Store at -20°C as received. |
| Stability: | Stable for 12 months from date of receipt. |
| Gene Name: | formyl peptide receptor 1 |
| Database Link: | NP_002020 Entrez Gene 719782 Monkey Entrez Gene 2357 Human P21462 |
| Synonyms: | FMLP; FPR |
| Protein Families: | Druggable Genome, GPCR, Transmembrane |
| Protein Pathways: | Neuroactive ligand-receptor interaction |



[View online »](#)

Product images:

Anti-FPR1 antibody IHC of human lymph node. Immunohistochemistry of formalin-fixed, paraffin-embedded tissue after heat-induced antigen retrieval.