

Product datasheet for **TA340808**

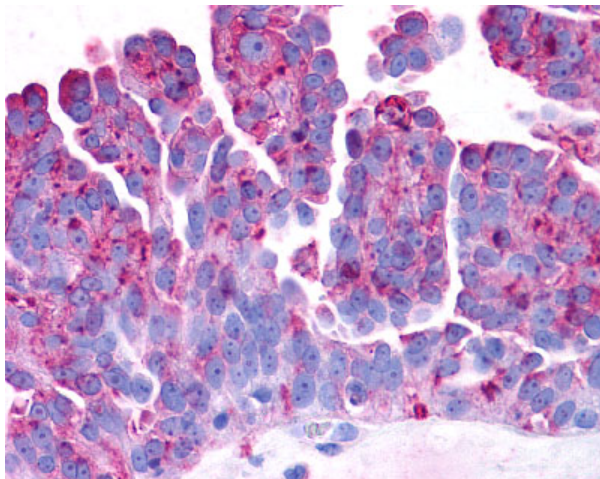
GPR37 Rabbit Polyclonal Antibody

Product data:

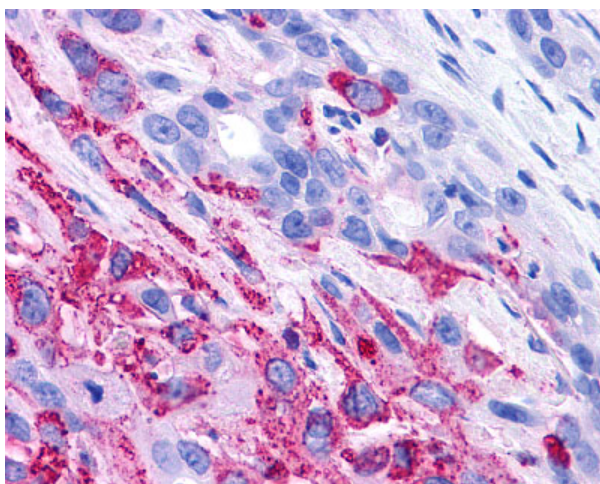
Product Type:	Primary Antibodies
Applications:	IHC
Recommended Dilution:	IHC-P (6 - 11 µg/ml)
Reactivity:	Human (Predicted: Monkey)
Host:	Rabbit
Clonality:	Polyclonal
Immunogen:	PAEL Receptor / GPR37 antibody was raised against synthetic 20 amino acid peptide from N-terminal extracellular domain of human GPR37. Percent identity with other species by BLAST analysis: Human, Gorilla, Gibbon, Monkey (95%); Marmoset (90%); Rabbit (85%); Panda (80%).
Formulation:	PBS, 0.1% sodium azide.
Concentration:	lot specific
Purification:	Immunoaffinity purified
Conjugation:	Unconjugated
Storage:	Store at -20°C as received.
Stability:	Stable for 12 months from date of receipt.
Gene Name:	G protein-coupled receptor 37
Database Link:	NP_005293 Entrez Gene 696628 Monkey Entrez Gene 2861 Human O15354
Synonyms:	EDNRBL; hET(B)R-LP; PAELR
Protein Families:	Druggable Genome, GPCR, Transmembrane
Protein Pathways:	Parkinson's disease



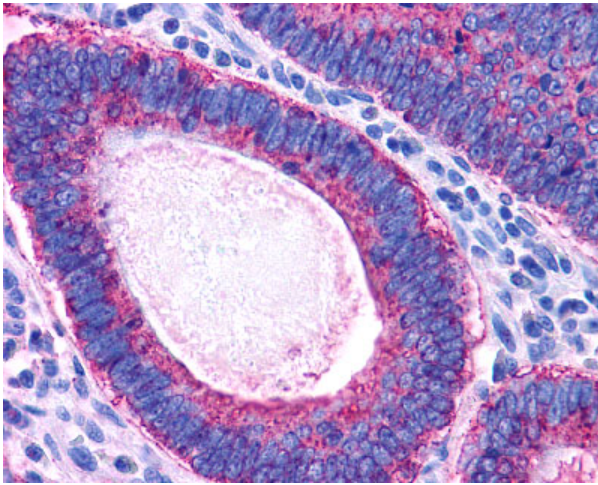
[View online »](#)

Product images:

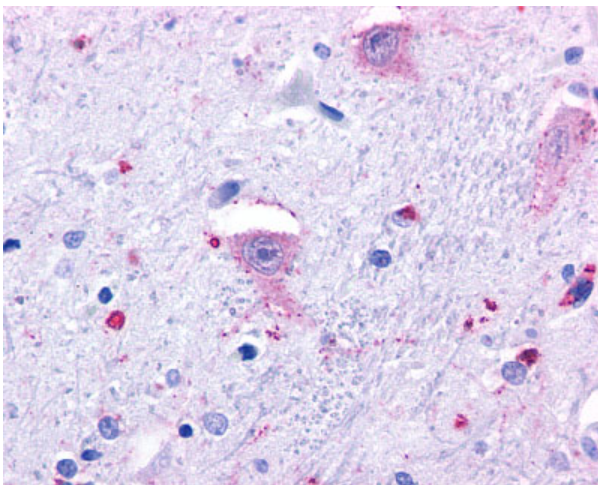
Anti-PAEL Receptor / GPR37 antibody IHC of human Ovary, Carcinoma.
Immunohistochemistry of formalin-fixed, paraffin-embedded tissue after heat-induced antigen retrieval.



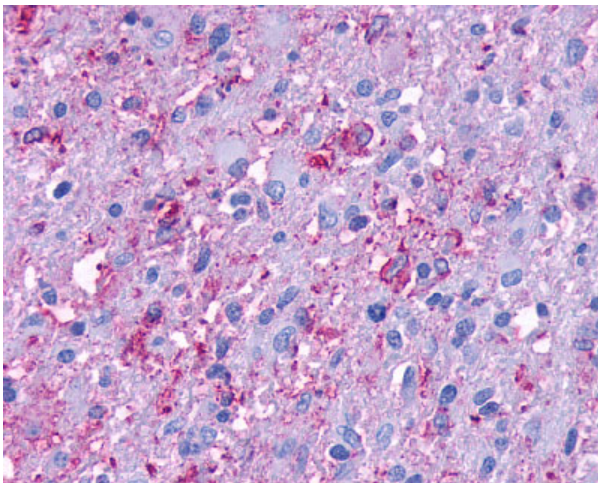
Anti-PAEL Receptor / GPR37 antibody IHC of human Pancreas, Carcinoma.
Immunohistochemistry of formalin-fixed, paraffin-embedded tissue after heat-induced antigen retrieval.



Anti-PAEL Receptor / GPR37 antibody IHC of human Colon, Carcinoma. Immunohistochemistry of formalin-fixed, paraffin-embedded tissue after heat-induced antigen retrieval.



Anti-GPR37 antibody IHC of human brain, neurons and glia. Immunohistochemistry of formalin-fixed, paraffin-embedded tissue after heat-induced antigen retrieval.



Anti-PAEL Receptor / GPR37 antibody IHC of human Brain, Glioblastoma. Immunohistochemistry of formalin-fixed, paraffin-embedded tissue after heat-induced antigen retrieval.