

Product datasheet for **TA340759**

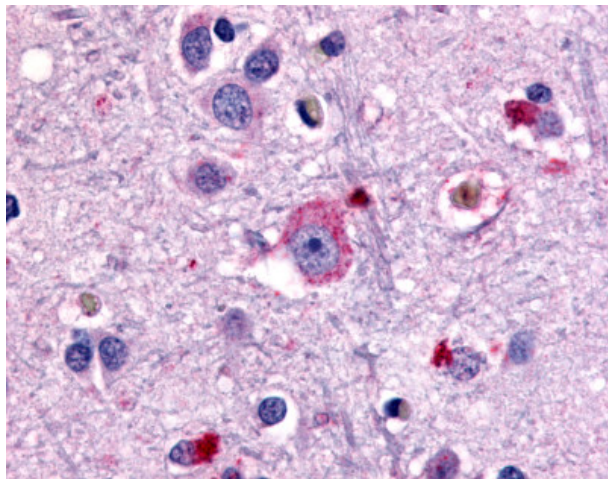
Metabotropic Glutamate Receptor 1 (GRM1) Rabbit Polyclonal Antibody

Product data:

Product Type:	Primary Antibodies
Applications:	IHC
Recommended Dilution:	IHC-P (17 µg/ml)
Reactivity:	Human (Predicted: Monkey, Mouse, Rat, Bat, Dog, Hamster, Horse)
Host:	Rabbit
Clonality:	Polyclonal
Immunogen:	GRM1 / MGLUR1 antibody was raised against synthetic 17 amino acid peptide from N-terminal extracellular domain of human GRM1 / MGLUR1. Percent identity with other species by BLAST analysis: Human, Chimpanzee, Gorilla, Gibbon, Elephant, Panda, Bovine, Rabbit (100%); Monkey, Marmoset, Mouse, Rat, Hamster, Dog, Bat, Horse, Opossum (94%); Chicken, Platypus (88%); Xenopus (82%).
Formulation:	PBS, 0.1% sodium azide.
Concentration:	lot specific
Purification:	Immunoaffinity purified
Conjugation:	Unconjugated
Storage:	Store at -20°C as received.
Stability:	Stable for 12 months from date of receipt.
Gene Name:	glutamate metabotropic receptor 1
Database Link:	NP_000829 Entrez Gene 14816 Mouse Entrez Gene 24414 Rat Entrez Gene 484024 Dog Entrez Gene 698736 Monkey Entrez Gene 2911 Human Q13255
Synonyms:	GPRC1A; GRM1A; mGlu1; MGLUR1; MGLUR1A; SCAR13
Protein Families:	Druggable Genome, GPCR, Transmembrane
Protein Pathways:	Calcium signaling pathway, Gap junction, Long-term depression, Long-term potentiation, Neuroactive ligand-receptor interaction



[View online »](#)

Product images:

Anti-GRM1 / MGLUR1 antibody IHC of human brain, neurons and glia. Immunohistochemistry of formalin-fixed, paraffin-embedded tissue after heat-induced antigen retrieval.