

Product datasheet for **TA340639**

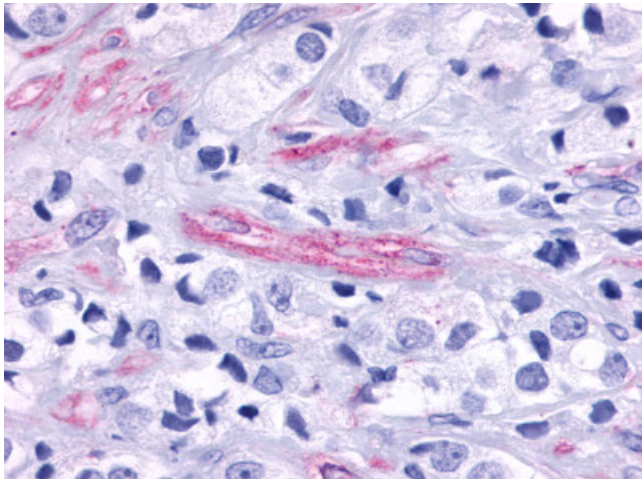
GPR124 (ADGRA2) Rabbit Polyclonal Antibody

Product data:

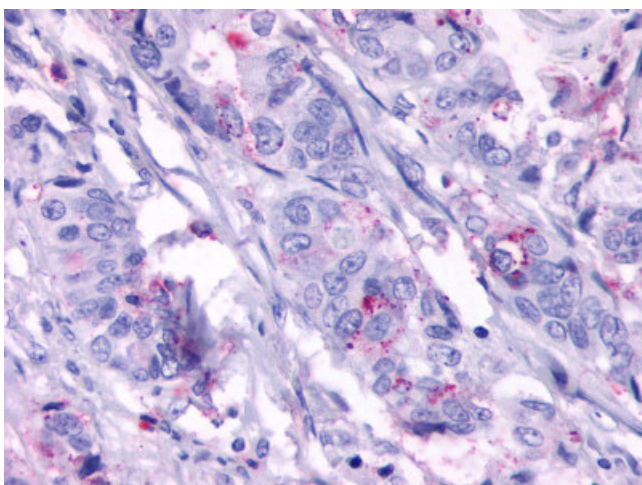
Product Type:	Primary Antibodies
Applications:	IHC
Recommended Dilution:	IHC-P (4 µg/ml)
Reactivity:	Human (Predicted: Mouse, Rat, Hamster, Chicken, Xenopus)
Host:	Rabbit
Clonality:	Polyclonal
Immunogen:	GPR124 / TEM5 antibody was raised against synthetic 17 amino acid peptide from N-terminal extracellular domain of human GPR124. Percent identity with other species by BLAST analysis: Human, Gorilla, Gibbon, Marmoset, Dog, Bat, Elephant, Panda, Horse, Rabbit, Pig, Opossum (100%); Mouse, Rat, Hamster, Turkey, Chicken, Xenopus (94%); Monkey, Bovine, Platypus, Lizard (82%).
Formulation:	PBS, 0.1% sodium azide.
Concentration:	lot specific
Purification:	Immunoaffinity purified
Conjugation:	Unconjugated
Storage:	Store at -20°C as received.
Stability:	Stable for 12 months from date of receipt.
Gene Name:	adhesion G protein-coupled receptor A2
Database Link:	NP_116166 Entrez Gene 78560 Mouse Entrez Gene 100363275 Rat Entrez Gene 25960 Human Q96PE1
Synonyms:	GPR124; TEM5
Protein Families:	Druggable Genome, Transmembrane



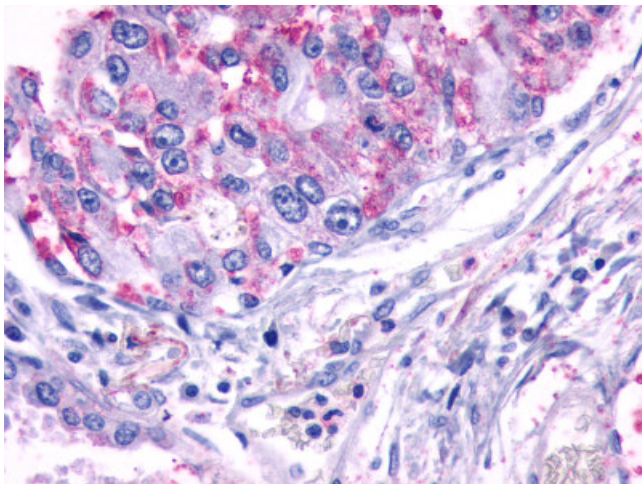
[View online »](#)

Product images:

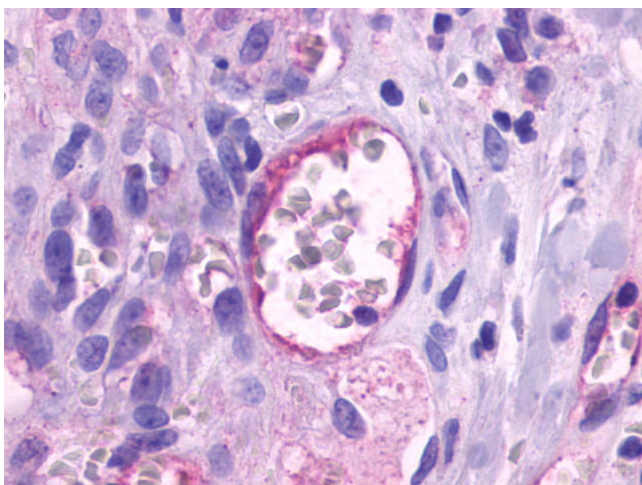
Anti-GPR124 / TEM5 antibody IHC of human Prostate, Carcinoma Endothelial Cells. Immunohistochemistry of formalin-fixed, paraffin-embedded tissue after heat-induced antigen retrieval.



Anti-GPR124 antibody IHC of human colon carcinoma, neoplastic cells. Immunohistochemistry of formalin-fixed, paraffin-embedded tissue after heat-induced antigen retrieval.



Anti-GPR124 / TEM5 antibody IHC of human Lung, Adenocarcinoma. Immunohistochemistry of formalin-fixed, paraffin-embedded tissue after heat-induced antigen retrieval.



Anti-GPR124 / TEM5 antibody IHC of human Skin, Kaposi Sarcoma capillary. Immunohistochemistry of formalin-fixed, paraffin-embedded tissue after heat-induced antigen retrieval.