

Product datasheet for **TA340538**

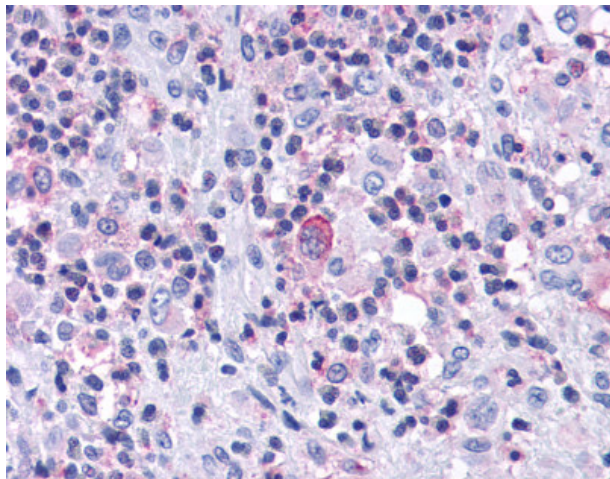
CCR7 Rabbit Polyclonal Antibody

Product data:

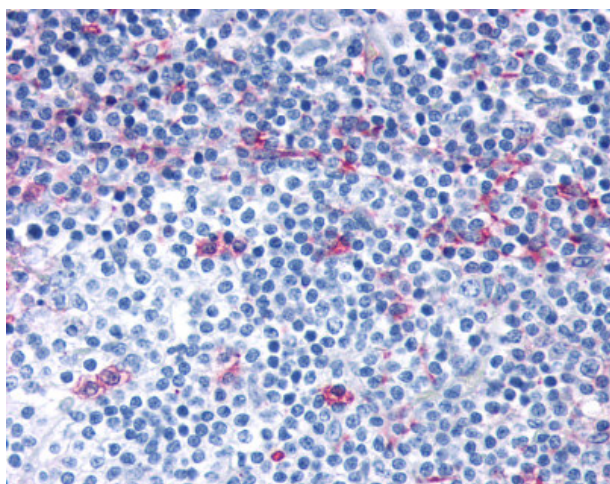
Product Type:	Primary Antibodies
Applications:	IHC
Recommended Dilution:	IHC-P (6 - 8 µg/ml)
Reactivity:	Human (Predicted: Dog)
Host:	Rabbit
Clonality:	Polyclonal
Immunogen:	CCR7 antibody was raised against synthetic 19 amino acid peptide from C-terminus of human CCR7. Percent identity with other species by BLAST analysis: Human, Gorilla, Gibbon, Monkey, Bovine (100%); Dog (95%); Marmoset, Panda, Bat (89%); Horse, Rabbit, Pig (84%).
Formulation:	PBS, 0.1% sodium azide.
Concentration:	lot specific
Purification:	Immunoaffinity purified
Conjugation:	Unconjugated
Storage:	Store at -20°C as received.
Stability:	Stable for 12 months from date of receipt.
Gene Name:	C-C motif chemokine receptor 7
Database Link:	NP_001829 Entrez Gene 491011 Dog Entrez Gene 1236 Human P32248
Synonyms:	BLR2; CD197; CDw197; CMKBR7; EBI1
Protein Families:	Druggable Genome, GPCR, Transmembrane
Protein Pathways:	Chemokine signaling pathway, Cytokine-cytokine receptor interaction



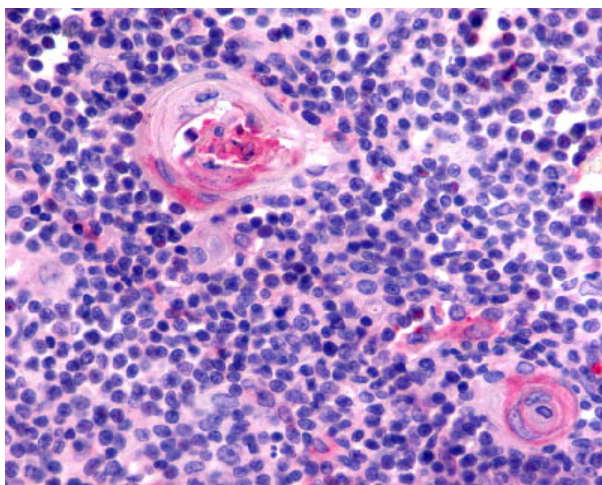
[View online »](#)

Product images:

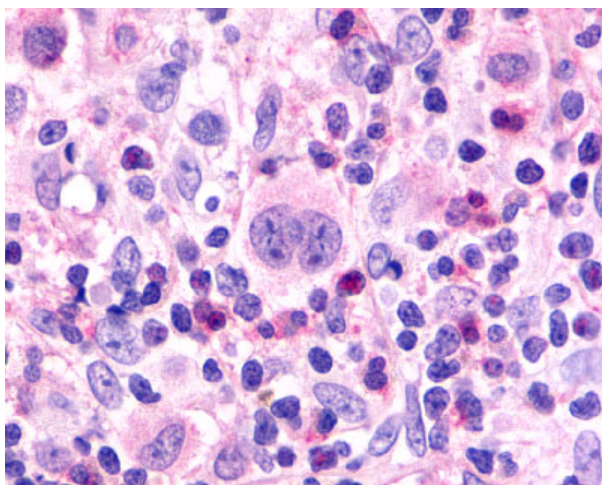
Anti-CCR7 antibody IHC of human Bone, Eosinophilic Granuloma. Immunohistochemistry of formalin-fixed, paraffin-embedded tissue after heat-induced antigen retrieval.



Anti-CCR7 antibody IHC of human lymph node. Immunohistochemistry of formalin-fixed, paraffin-embedded tissue after heat-induced antigen retrieval.



Anti-CCR7 antibody IHC of human thymus. Immunohistochemistry of formalin-fixed, paraffin-embedded tissue after heat-induced antigen retrieval.



Anti-CCR7 antibody IHC of human Lymph Node, Hodgkins Lymphoma. Immunohistochemistry of formalin-fixed, paraffin-embedded tissue after heat-induced antigen retrieval.