

Product datasheet for **TA340523**

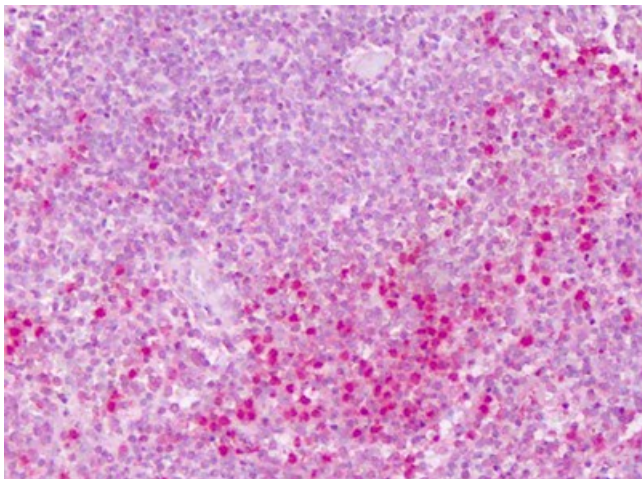
PTP epsilon (PTPRE) Rabbit Polyclonal Antibody

Product data:

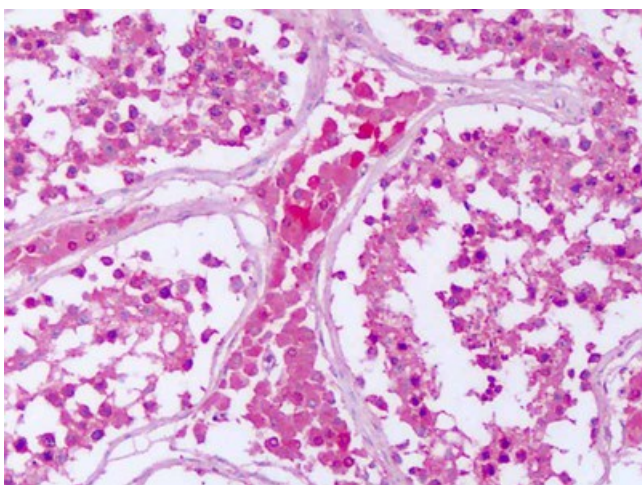
| | |
|-----------------------|---|
| Product Type: | Primary Antibodies |
| Applications: | IHC |
| Recommended Dilution: | IHC-P (3 - 6 µg/ml) |
| Reactivity: | Human (Predicted: Mouse, Rat, Xenopus, Zebrafish) |
| Host: | Rabbit |
| Clonality: | Polyclonal |
| Immunogen: | PTPRE / PTP Epsilon antibody was raised against synthetic 18 amino acid peptide from cytoplasmic domain of human PTPRE. Percent identity with other species by BLAST analysis: Human, Gibbon, Monkey, Marmoset, Hamster, Elephant, Panda, Dog, Bat, Bovine, Horse, Opossum, Turkey, Chicken, Platypus, Lizard (100%); Mouse, Rat, Xenopus, Zebrafish (94%); Seabass, Pufferfish (89%); Stickleback, Medaka (83%). |
| Formulation: | PBS, 0.1% sodium azide. |
| Concentration: | lot specific |
| Purification: | Immunoaffinity purified |
| Conjugation: | Unconjugated |
| Storage: | Store at -20°C as received. |
| Stability: | Stable for 12 months from date of receipt. |
| Gene Name: | protein tyrosine phosphatase, receptor type E |
| Database Link: | NP_006495 Entrez Gene 19267 Mouse Entrez Gene 114767 Rat Entrez Gene 5791 Human P23469 |
| Synonyms: | HPTPE; PTPE; R-PTP-EPSILON |
| Protein Families: | Druggable Genome, Phosphatase, Transmembrane |



[View online »](#)

Product images:

Anti-PTPRE antibody IHC of human spleen. Immunohistochemistry of formalin-fixed, paraffin-embedded tissue after heat-induced antigen retrieval. Antibody dilution 3-6 ug/ml.



Anti-PTPRE antibody IHC of human testis. Immunohistochemistry of formalin-fixed, paraffin-embedded tissue after heat-induced antigen retrieval. Antibody dilution 3-6 ug/ml.