

Product datasheet for **TA340508**

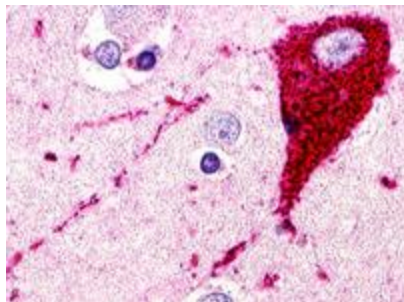
SREB3 (GPR173) Rabbit Polyclonal Antibody

Product data:

Product Type:	Primary Antibodies
Applications:	IHC
Recommended Dilution:	IHC-P (6.4 µg/ml)
Reactivity:	Human (Predicted: Mouse, Rat, Bovine, Hamster)
Host:	Rabbit
Clonality:	Polyclonal
Immunogen:	GPR173 / SREB3 antibody was raised against synthetic 19 amino acid peptide from N-terminal extracellular domain of human GPR173. Percent identity with other species by BLAST analysis: Human, Gorilla, Gibbon, Monkey, Marmoset, Elephant, Panda, Dog, Bat, Rabbit (100%); Mouse, Rat, Hamster, Bovine (95%).
Formulation:	PBS, 0.1% sodium azide.
Concentration:	lot specific
Purification:	Immunoaffinity purified
Conjugation:	Unconjugated
Storage:	Store at -20°C as received.
Stability:	Stable for 12 months from date of receipt.
Gene Name:	G protein-coupled receptor 173
Database Link:	NP_061842 Entrez Gene 64021 Rat Entrez Gene 70771 Mouse Entrez Gene 54328 Human Q9NS66
Synonyms:	SREB3
Protein Families:	Druggable Genome, GPCR, Transmembrane



[View online »](#)

Product images:

Anti-GPR173 antibody IHC of human brain, neuron. Immunohistochemistry of formalin-fixed, paraffin-embedded tissue after heat-induced antigen retrieval.