

## Product datasheet for **TA340326**

### STARS (ABRA) Rabbit Polyclonal Antibody

#### Product data:

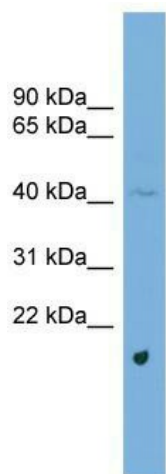
Product Type:	Primary Antibodies
Applications:	WB
Recommended Dilution:	WB
Reactivity:	Human
Host:	Rabbit
Isotype:	IgG
Clonality:	Polyclonal
Immunogen:	The immunogen for anti-ABRA antibody: synthetic peptide directed towards the middle region of human ABRA. Synthetic peptide located within the following region: QWADEHIQSQKLNPFSEEFDYELAMSTRHLHKGDEGYGRPKEGKTAERAK
Formulation:	Liquid. Purified antibody supplied in 1x PBS buffer with 0.09% (w/v) sodium azide and 2% sucrose. <i>Note that this product is shipped as lyophilized powder to China customers.</i>
Concentration:	lot specific
Purification:	Affinity Purified
Conjugation:	Unconjugated
Storage:	Store at -20°C as received.
Stability:	Stable for 12 months from date of receipt.
Predicted Protein Size:	43
Gene Name:	actin binding Rho activating protein
Database Link:	<a href="#">NP_631905</a> <a href="#">Entrez Gene 137735 Human</a> <a href="#">Q8N0Z2</a>
Background:	ABRA acts as an activator of serum response factor (SRF)-dependent transcription possibly by inducing nuclear translocation of MKL1 or MKL2 and through a mechanism requiring Rho-actin signaling.
Synonyms:	STARS



[View online »](#)

**Note:** Immunogen Sequence Homology: Dog: 100%; Pig: 100%; Rat: 100%; Horse: 100%; Human: 100%; Mouse: 100%; Bovine: 100%; Rabbit: 100%; Zebrafish: 93%; Guinea pig: 93%

**Product images:**



WB Suggested Anti-ABRA Antibody Titration: 0.2-1 ug/ml; Positive Control: Human Lung