

## Product datasheet for **TA340317**

### FAM3D Rabbit Polyclonal Antibody

#### Product data:

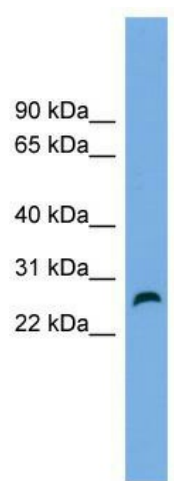
Product Type:	Primary Antibodies
Applications:	WB
Recommended Dilution:	WB
Reactivity:	Human
Host:	Rabbit
Isotype:	IgG
Clonality:	Polyclonal
Immunogen:	The immunogen for anti-FAM3D antibody: synthetic peptide directed towards the middle region of human FAM3D. Synthetic peptide located within the following region: LVASYDDPGTKMNDSESRKLFSDLGSSYAKQLGFRDSWVFIGAKDLRGKSP
Formulation:	Liquid. Purified antibody supplied in 1x PBS buffer with 0.09% (w/v) sodium azide and 2% sucrose. <i>Note that this product is shipped as lyophilized powder to China customers.</i>
Concentration:	lot specific
Purification:	Affinity Purified
Conjugation:	Unconjugated
Storage:	Store at -20°C as received.
Stability:	Stable for 12 months from date of receipt.
Predicted Protein Size:	25
Gene Name:	family with sequence similarity 3 member D
Database Link:	<a href="#">NP_620160</a> <a href="#">Entrez Gene 131177 Human</a> <a href="#">Q96BQ1</a>
Background:	The function of this protein remains unknown.
Synonyms:	EF7; OIT1
Note:	Immunogen Sequence Homology: Human: 100%; Rat: 92%; Dog: 85%; Pig: 85%; Horse: 85%; Bovine: 85%; Guinea pig: 85%; Rabbit: 79%; Mouse: 77%



[View online »](#)

Protein Families: Secreted Protein, Transmembrane

### Product images:



WB Suggested Anti-FAM3D Antibody Titration:  
0.2-1 ug/ml; ELISA Titer: 1: 1562500; Positive  
Control: Jurkat cell lysate