

Product datasheet for **TA340153**

Nup50 Rabbit Polyclonal Antibody

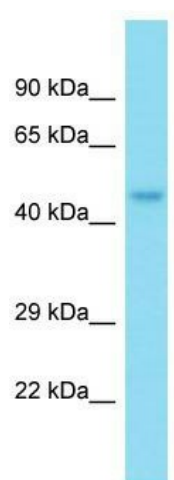
Product data:

Product Type:	Primary Antibodies
Applications:	WB
Recommended Dilution:	WB
Reactivity:	Rat
Host:	Rabbit
Isotype:	IgG
Clonality:	Polyclonal
Immunogen:	The immunogen for Anti-Npap60 antibody is: synthetic peptide directed towards the N-terminal region of Rat Npap60. Synthetic peptide located within the following region: VEEMGTFSVASEEVMKNRAVKKAKRRNIGFESDSGGAFKGFKGLVPSGG
Formulation:	Liquid. Purified antibody supplied in 1x PBS buffer with 0.09% (w/v) sodium azide and 2% sucrose. <i>Note that this product is shipped as lyophilized powder to China customers.</i>
Concentration:	lot specific
Purification:	Affinity Purified
Conjugation:	Unconjugated
Storage:	Store at -20°C as received.
Stability:	Stable for 12 months from date of receipt.
Predicted Protein Size:	51 kDa
Gene Name:	nuclear pore associated protein
Database Link:	NP_037123 Entrez Gene 25497 Rat O08587
Background:	Npap60 is a nucleoporin with a role in nuclear protein export.
Synonyms:	Nup50; Rtp60
Note:	Immunogen Sequence Homology: Dog: 100%; Pig: 100%; Rat: 100%; Horse: 100%; Human: 100%; Mouse: 100%; Bovine: 100%; Guinea pig: 100%; Rabbit: 85%



[View online »](#)

Product images:



Host: Rabbit; Target Name: Npap60; Sample Tissue: Rat Brain lysates; Antibody Dilution: 1.0 ug/ml