

## Product datasheet for **TA339727**

### TIPIN Rabbit Polyclonal Antibody

#### Product data:

Product Type:	Primary Antibodies
Applications:	WB
Recommended Dilution:	WB
Reactivity:	Human
Host:	Rabbit
Isotype:	IgG
Clonality:	Polyclonal
Immunogen:	The immunogen for anti-TIPIN antibody: synthetic peptide directed towards the N terminal of human TIPIN. Synthetic peptide located within the following region: MLEPQENGVIDLPDYEHVEDETFFPPPPASPERQDGEGTEPDEESGNGA
Formulation:	Liquid. Purified antibody supplied in 1x PBS buffer with 0.09% (w/v) sodium azide and 2% sucrose. <i>Note that this product is shipped as lyophilized powder to China customers.</i>
Concentration:	lot specific
Purification:	Protein A purified
Conjugation:	Unconjugated
Storage:	Store at -20°C as received.
Stability:	Stable for 12 months from date of receipt.
Predicted Protein Size:	34 kDa
Gene Name:	TIMELESS interacting protein
Database Link:	<a href="#">NP_060328</a> <a href="#">Entrez Gene 54962 Human</a> <a href="#">Q9BVW5</a>
Background:	TIPIN is required for normal progression of S-phase. It is important for cell survival after DNA damage or replication stress and may be specifically required for the ATR-CHK1 pathway in the replication checkpoint induced by hydroxyurea or ultraviolet light.
Synonyms:	FLJ20516

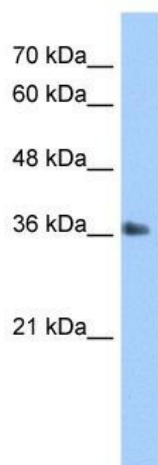


[View online »](#)

**Note:** Immunogen Sequence Homology: Pig: 100%; Horse: 100%; Human: 100%; Mouse: 100%; Bovine: 100%; Rabbit: 100%; Guinea pig: 100%; Dog: 93%; Rat: 93%; Zebrafish: 85%

**Protein Families:** Druggable Genome

### Product images:



WB Suggested Anti-TIPIN Antibody Titration: 5.0 ug/ml; Positive Control: Jurkat cell lysate TIPIN is supported by BioGPS gene expression data to be expressed in Jurkat