

Product datasheet for **TA339694**

APC2 Rabbit Polyclonal Antibody

Product data:

Product Type:	Primary Antibodies
Applications:	IHC, WB
Recommended Dilution:	WB, IHC
Reactivity:	Human
Host:	Rabbit
Isotype:	IgG
Clonality:	Polyclonal
Immunogen:	The immunogen for anti-APC2 antibody: synthetic peptide directed towards the middle region of human APC2. Synthetic peptide located within the following region: LAVARIDQLVEDISALHTSSDDSFSLSSGDPGQEAPREGRAQSCSPCRGP
Formulation:	Liquid. Purified antibody supplied in 1x PBS buffer with 0.09% (w/v) sodium azide and 2% sucrose. <i>Note that this product is shipped as lyophilized powder to China customers.</i>
Concentration:	lot specific
Purification:	Affinity Purified
Conjugation:	Unconjugated
Storage:	Store at -20°C as received.
Stability:	Stable for 12 months from date of receipt.
Predicted Protein Size:	244 kDa
Gene Name:	adenomatosis polyposis coli 2
Database Link:	NP_005874 Entrez Gene 10297 Human O95996
Background:	APC2 belongs to the adenomatous polyposis coli (APC) family. It contains 6 ARM repeats. APC2 promotes rapid degradation of CTNNB1 and may function as a tumor suppressor. It may function in Wnt signaling.
Synonyms:	APCL



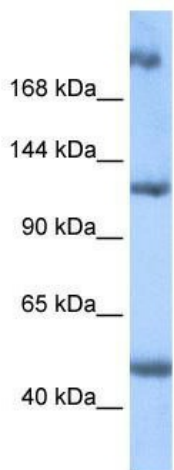
[View online »](#)

Note: Immunogen Sequence Homology: Dog: 100%; Pig: 100%; Rat: 100%; Human: 100%; Mouse: 100%; Bovine: 100%; Guinea pig: 100%

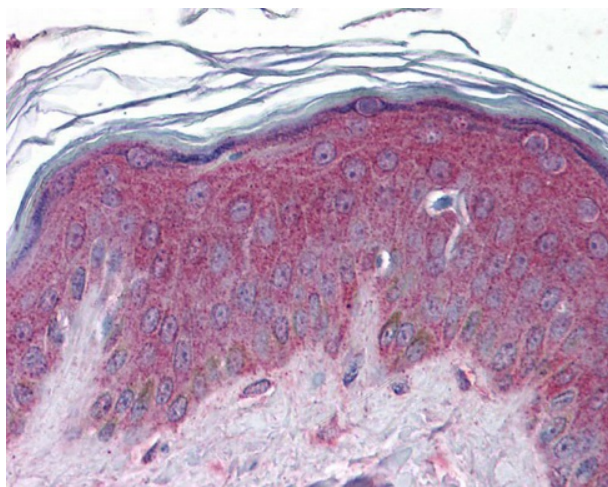
Protein Families: Druggable Genome

Protein Pathways: Basal cell carcinoma, Colorectal cancer, Endometrial cancer, Pathways in cancer, Regulation of actin cytoskeleton, Wnt signaling pathway

Product images:



WB Suggested Anti-APC2 Antibody Titration: 0.2-1 ug/ml; Positive Control: Human Placenta



Skin