

Product datasheet for **TA339144**

ZIC2 Rabbit Polyclonal Antibody

Product data:

Product Type:	Primary Antibodies
Applications:	IHC, WB
Recommended Dilution:	WB, IHC
Reactivity:	Human
Host:	Rabbit
Isotype:	IgG
Clonality:	Polyclonal
Immunogen:	The immunogen for anti-ZIC2 antibody: synthetic peptide directed towards the C terminal of human ZIC2. Synthetic peptide located within the following region: EPQSSSNLSPAAAAAAAAAAAAAAAAAVSAVHRGGGSGGGAGGGSGGGSGS
Formulation:	Liquid. Purified antibody supplied in 1x PBS buffer with 0.09% (w/v) sodium azide and 2% sucrose. <i>Note that this product is shipped as lyophilized powder to China customers.</i>
Concentration:	lot specific
Purification:	Protein A purified
Conjugation:	Unconjugated
Storage:	Store at -20°C as received.
Stability:	Stable for 12 months from date of receipt.
Predicted Protein Size:	55 kDa
Gene Name:	Zic family member 2
Database Link:	NP_009060 Entrez Gene 7546 Human O95409

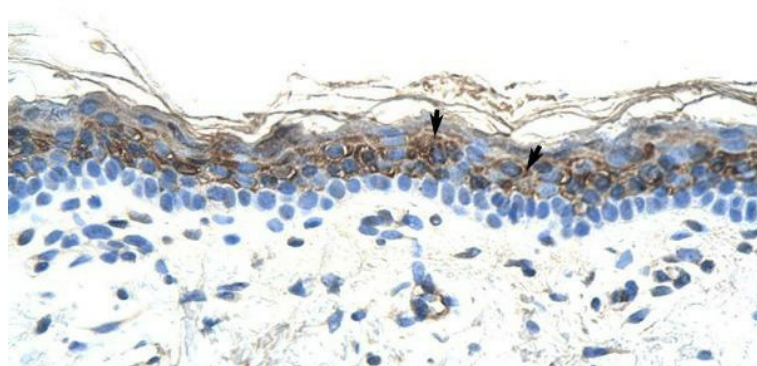


[View online »](#)

Background:	This gene encodes a member of the ZIC family of C2H2-type zinc finger proteins. This protein functions as a transcriptional repressor and may regulate tissue specific expression of dopamine receptor D1. Mutations in this gene cause holoprosencephaly type 5. Holoprosencephaly is the most common structural anomaly of the human brain. A polyhistidine tract polymorphism in this gene may be associated with increased risk of neural tube defects. This gene is closely linked to a gene encoding zinc finger protein of the cerebellum 5, a related family member on chromosome 13. [provided by RefSeq, Jul 2008]
Synonyms:	HPE5
Note:	Immunogen Sequence Homology: Human: 100%; Rat: 92%; Pig: 87%; Guinea pig: 87%; Mouse: 85%
Protein Families:	Druggable Genome
Protein Pathways:	Hedgehog signaling pathway

Product images:

WB Suggested Anti-ZIC2 Antibody Titration: 0.2-1 ug/ml; Positive Control: HepG2 cell lysate



Human Skin