

Product datasheet for **TA338710**

KCTD15 Rabbit Polyclonal Antibody

Product data:

Product Type:	Primary Antibodies
Applications:	WB
Recommended Dilution:	WB
Reactivity:	Human
Host:	Rabbit
Isotype:	IgG
Clonality:	Polyclonal
Immunogen:	The immunogen for anti-KCTD15 antibody: synthetic peptide directed towards the N terminal of human KCTD15. Synthetic peptide located within the following region: PVSP L AAQGIPLPAQLTKSNAPVHIDVGGHMYTSSLATLTKYPDSRISRL
Formulation:	Liquid. Purified antibody supplied in 1x PBS buffer with 0.09% (w/v) sodium azide and 2% sucrose. <i>Note that this product is shipped as lyophilized powder to China customers.</i>
Concentration:	lot specific
Purification:	Protein A purified
Conjugation:	Unconjugated
Storage:	Store at -20°C as received.
Stability:	Stable for 12 months from date of receipt.
Predicted Protein Size:	26 kDa
Gene Name:	potassium channel tetramerization domain containing 15
Database Link:	NP_076981 Entrez Gene 79047 Human Q96S11
Background:	KCTD15 contains 1 BTB (POZ) domain. The exact function of KCTD15 is not known.
Synonyms:	MGC2628; MGC25497

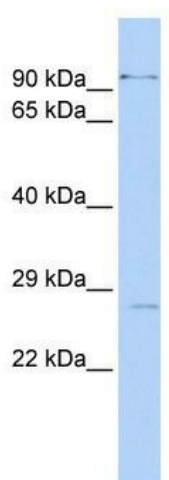


[View online »](#)

Note: Immunogen Sequence Homology: Dog: 100%; Pig: 100%; Rat: 100%; Horse: 100%; Human: 100%; Mouse: 100%; Bovine: 100%; Rabbit: 100%; Zebrafish: 100%; Guinea pig: 100%; Goat: 91%

Protein Families: Ion Channels: Other

Product images:



WB Suggested Anti-KCTD15 Antibody Titration:
0.2-1 ug/ml; ELISA Titer: 1:62500; Positive Control:
MCF7 cell lysate