

## Product datasheet for **TA338556**

### **Kv1.8 (KCNA10) Rabbit Polyclonal Antibody**

#### **Product data:**

<b>Product Type:</b>	Primary Antibodies
<b>Applications:</b>	IHC, WB
<b>Recommended Dilution:</b>	WB, IHC
<b>Reactivity:</b>	Human
<b>Host:</b>	Rabbit
<b>Isotype:</b>	IgG
<b>Clonality:</b>	Polyclonal
<b>Immunogen:</b>	The immunogen for anti-KCNA10 antibody: synthetic peptide directed towards the middle region of human KCNA10. Synthetic peptide located within the following region: PANVPIDIFADEISFYELGSEAMDQFREDEGFIKDPETLLPTNDIHRQFW
<b>Formulation:</b>	Liquid. Purified antibody supplied in 1x PBS buffer with 0.09% (w/v) sodium azide and 2% sucrose. <i>Note that this product is shipped as lyophilized powder to China customers.</i>
<b>Concentration:</b>	lot specific
<b>Purification:</b>	Protein A purified
<b>Conjugation:</b>	Unconjugated
<b>Storage:</b>	Store at -20°C as received.
<b>Stability:</b>	Stable for 12 months from date of receipt.
<b>Predicted Protein Size:</b>	56 kDa
<b>Gene Name:</b>	potassium voltage-gated channel subfamily A member 10
<b>Database Link:</b>	<a href="#">NP_005540</a> <a href="#">Entrez Gene 3744 Human</a> <a href="#">Q16322</a>



[View online »](#)

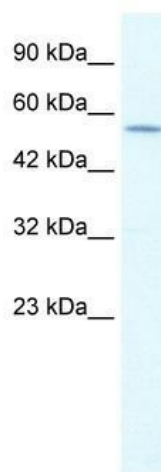
**Background:** Potassium channels represent the most complex class of voltage-gated ion channels from both functional and structural standpoints. Their diverse functions include regulating neurotransmitter release, heart rate, insulin secretion, neuronal excitability, epithelial electrolyte transport, smooth muscle contraction, and cell volume. Four sequence-related potassium channel genes - shaker, shaw, shab, and shal - have been identified in *Drosophila*, and each has been shown to have human homolog(s). This gene encodes a member of the potassium channel, voltage-gated, shaker-related subfamily. This member contains six membrane-spanning domains with a shaker-type repeat in the fourth segment. It is specifically regulated by cGMP and postulated to mediate the effects of substances that increase intracellular cGMP. This gene is intronless, and the gene is clustered with genes KCNA2 and KCNA3 on chromosome 1. [provided by RefSeq, Jul 2008]

**Synonyms:** Kcn1; Kv1.8

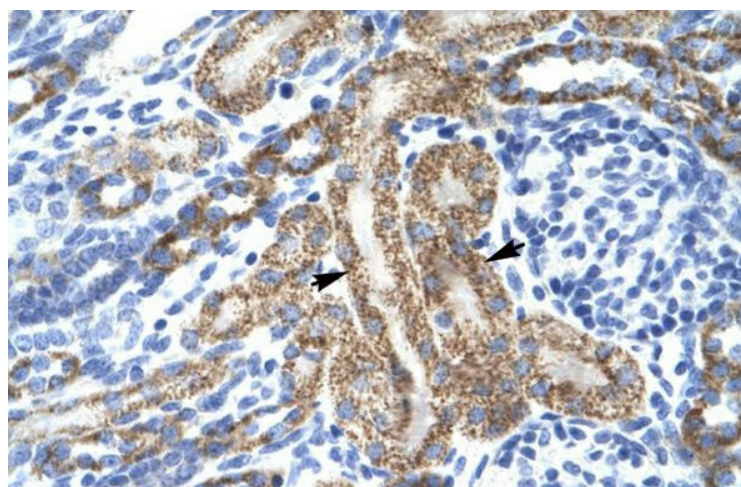
**Note:** Immunogen Sequence Homology: Rat: 100%; Human: 100%; Mouse: 100%; Bovine: 100%; Dog: 92%; Pig: 92%; Guinea pig: 92%

**Protein Families:** Druggable Genome, Ion Channels: Potassium, Transmembrane

### Product images:



WB Suggested Anti-KCNA10 Antibody Titration:  
1.25 ug/ml; ELISA Titer: 1:312500; Positive  
Control: Jurkat cell lysate



Human kidney