

Product datasheet for **TA338533**

P2RX7 Rabbit Polyclonal Antibody

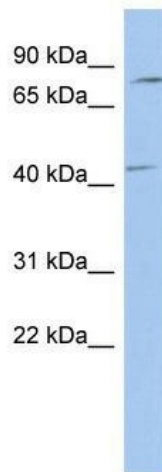
Product data:

Product Type:	Primary Antibodies
Applications:	WB
Recommended Dilution:	WB
Reactivity:	Human
Host:	Rabbit
Isotype:	IgG
Clonality:	Polyclonal
Immunogen:	The immunogen for anti-P2RX7 antibody: synthetic peptide directed towards the middle region of human P2RX7. Synthetic peptide located within the following region: LRHCAYRCYATWRFSGQDMADFANLPSCCRWRIRKEFPKSEGQYSGFKSP
Formulation:	Liquid. Purified antibody supplied in 1x PBS buffer with 0.09% (w/v) sodium azide and 2% sucrose. <i>Note that this product is shipped as lyophilized powder to China customers.</i>
Concentration:	lot specific
Purification:	Protein A purified
Conjugation:	Unconjugated
Storage:	Store at -20°C as received.
Stability:	Stable for 12 months from date of receipt.
Predicted Protein Size:	68 kDa
Gene Name:	purinergic receptor P2X 7
Database Link:	NP_002553 Entrez Gene 5027 Human Q99572

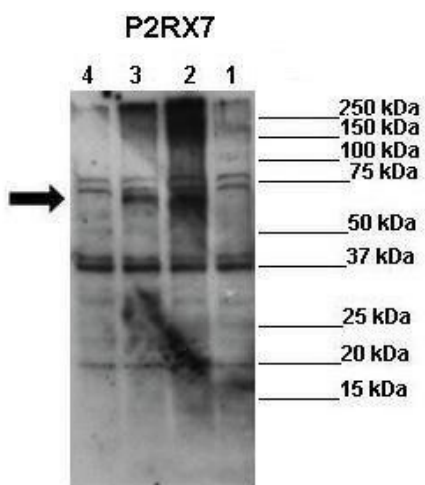


[View online »](#)

- Background:** The product of this gene belongs to the family of purinoceptors for ATP. This receptor functions as a ligand-gated ion channel and is responsible for ATP-dependent lysis of macrophages through the formation of membrane pores permeable to large molecules. Activation of this nuclear receptor by ATP in the cytoplasm may be a mechanism by which cellular activity can be coupled to changes in gene expression. Multiple alternatively spliced variants have been identified, most of which fit nonsense-mediated decay (NMD) criteria. [provided by RefSeq, Jul 2010]
- Synonyms:** P2X7
- Note:** Immunogen Sequence Homology: Human: 100%; Bovine: 100%; Dog: 93%; Pig: 93%; Rabbit: 93%; Mouse: 92%; Horse: 86%; Rat: 85%; Guinea pig: 83%
- Protein Families:** Druggable Genome, Ion Channels: ATP Receptors, Transmembrane
- Protein Pathways:** Calcium signaling pathway, Neuroactive ligand-receptor interaction
- Product images:**



WB Suggested Anti-P2RX7 Antibody Titration: 0.2-1 ug/ml; ELISA Titer: 1:62500; Positive Control: Human Stomach



WB Suggested Anti-P2RX7 Antibody ; Positive Control: Lane 1: 50ug mock transfected HEK-293
 Lane 2: 50ug hP2X7 transfected HEK-293
 Lane 3: 50ug mP2X7 transfected HEK-293
 Lane 4: 50ug rP2X7 transfected HEK-293; Primary Antibody Dilution : 1:625; Secondary Anti