

Product datasheet for **TA338532**

P2X1 (P2RX1) Rabbit Polyclonal Antibody

Product data:

Product Type:	Primary Antibodies
Applications:	IHC, WB
Recommended Dilution:	WB, IHC
Reactivity:	Human
Host:	Rabbit
Isotype:	IgG
Clonality:	Polyclonal
Immunogen:	The immunogen for anti-P2RX1 antibody: synthetic peptide directed towards the middle region of human P2RX1. Synthetic peptide located within the following region: VVGITIDWHCDLDWHVRHCRPIYEFHGLYEKLNLSPGFNFRFARHFVENG
Formulation:	Liquid. Purified antibody supplied in 1x PBS buffer with 0.09% (w/v) sodium azide and 2% sucrose. <i>Note that this product is shipped as lyophilized powder to China customers.</i>
Concentration:	lot specific
Purification:	Protein A purified
Conjugation:	Unconjugated
Storage:	Store at -20°C as received.
Stability:	Stable for 12 months from date of receipt.
Predicted Protein Size:	45 kDa
Gene Name:	purinergic receptor P2X 1
Database Link:	NP_002549 Entrez Gene 5023 Human P51575



[View online »](#)

Background:

The protein encoded by this gene belongs to the P2X family of G-protein-coupled receptors. These proteins can form homo- and heterotimers and function as ATP-gated ion channels and mediate rapid and selective permeability to cations. This protein is primarily localized to smooth muscle where it binds ATP and mediates synaptic transmission between neurons and from neurons to smooth muscle and may be responsible for sympathetic vasoconstriction in small arteries, arterioles and vas deferens. Mouse studies suggest that this receptor is essential for normal male reproductive function. This protein may also be involved in promoting apoptosis. [provided by RefSeq, Jun 2013]

Synonyms:

P2X1

Note:

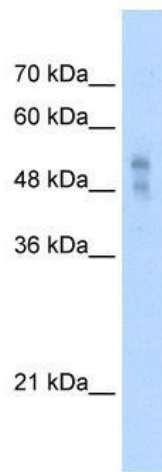
Immunogen Sequence Homology: Dog: 100%; Horse: 100%; Human: 100%; Pig: 93%; Rat: 93%; Mouse: 93%; Rabbit: 93%; Guinea pig: 93%; Bovine: 86%

Protein Families:

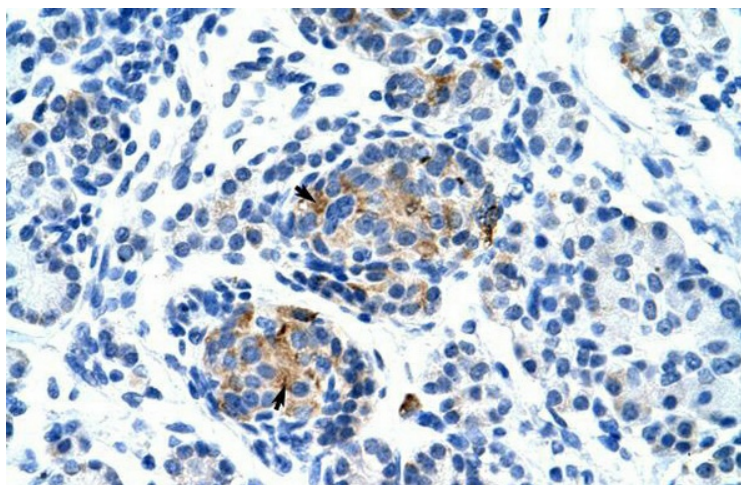
Druggable Genome, Ion Channels: ATP Receptors, Transmembrane

Protein Pathways:

Calcium signaling pathway, Neuroactive ligand-receptor interaction

Product images:

WB Suggested Anti-P2RX1 Antibody Titration: 2.5 ug/ml; ELISA Titer: 1:312500; Positive Control: HepG2 cell lysate



Human Pancreas