

## Product datasheet for **TA338456**

### Angiotensin like 7 (ANGPTL7) Rabbit Polyclonal Antibody

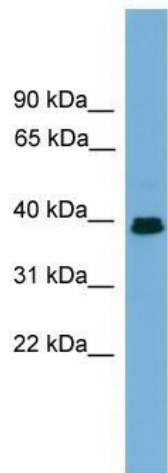
#### Product data:

Product Type:	Primary Antibodies
Applications:	WB
Recommended Dilution:	WB
Reactivity:	Human
Host:	Rabbit
Isotype:	IgG
Clonality:	Polyclonal
Immunogen:	The immunogen for anti-ANGPTL7 antibody: synthetic peptide directed towards the middle region of human ANGPTL7. Synthetic peptide located within the following region: NQIDIMQLQAAQTVTQTSADAIYDCSSLYQKNYRISGVYKLPDFFLGSP
Formulation:	Liquid. Purified antibody supplied in 1x PBS buffer with 0.09% (w/v) sodium azide and 2% sucrose. <i>Note that this product is shipped as lyophilized powder to China customers.</i>
Purification:	Affinity Purified
Conjugation:	Unconjugated
Storage:	Store at -20°C as received.
Stability:	Stable for 12 months from date of receipt.
Predicted Protein Size:	40 kDa
Gene Name:	angiotensin like 7
Database Link:	<a href="#">NP_066969</a> <a href="#">Entrez Gene 10218 Human</a> <a href="#">O43827</a>
Background:	The function of ANGPTL7 remains unknown.
Synonyms:	AngX; CDT6; dj647M16.1
Note:	Immunogen Sequence Homology: Dog: 100%; Pig: 100%; Rat: 100%; Horse: 100%; Human: 100%; Mouse: 100%; Bovine: 100%; Rabbit: 93%; Guinea pig: 93%
Protein Families:	Druggable Genome, Secreted Protein, Transmembrane



[View online »](#)

Product images:



WB Suggested Anti-ANGPTL7 Antibody Titration:  
0.2-1 ug/ml; ELISA Titer: 1: 312500; Positive  
Control: MCF7 cell lysate

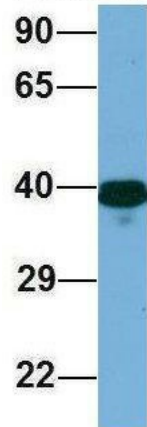
**ANGPTL7**



Rabbit Anti-ANGPTL7  
Sample Type: Human 293T  
Antibody Concentration: 1ug/mL

Host: Rabbit; Target Name: ANGPTL7; Sample  
Tissue: 293T; Antibody Dilution: 1.0 ug/ml

## ANGPTL7



Rabbit Anti-ANGPTL7  
Sample Type: Human 721\_B  
Antibody Concentration: 1ug/mL

Host: Rabbit; Target Name: ANGPTL7; Sample  
Tissue: 721\_B; Antibody Dilution: 1.0 ug/ml  
ANGPTL7 is supported by BioGPS gene  
expression data to be expressed in 721\_B