

Product datasheet for **TA338276**

delta 2 Catenin (CTNND2) Rabbit Polyclonal Antibody

Product data:

Product Type:	Primary Antibodies
Applications:	WB
Recommended Dilution:	WB
Reactivity:	Human
Host:	Rabbit
Isotype:	IgG
Clonality:	Polyclonal
Immunogen:	The immunogen for anti-CTNND2 antibody is: synthetic peptide directed towards the C-terminal region of Human CTNND2. Synthetic peptide located within the following region: PNNRSASAPSPREMISLKERKTDYECTGSGNATYHGAKGEHTSRKDAMTA
Formulation:	Liquid. Purified antibody supplied in 1x PBS buffer with 0.09% (w/v) sodium azide and 2% sucrose. <i>Note that this product is shipped as lyophilized powder to China customers.</i>
Purification:	Affinity Purified
Conjugation:	Unconjugated
Storage:	Store at -20°C as received.
Stability:	Stable for 12 months from date of receipt.
Predicted Protein Size:	133 kDa
Gene Name:	catenin delta 2
Database Link:	NP_001323 Entrez Gene 1501 Human Q9UQB3



[View online »](#)

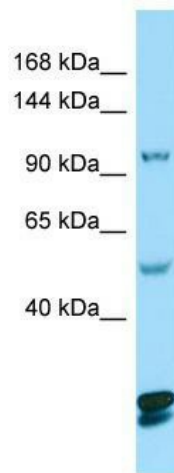
Background: This gene encodes an adhesive junction associated protein of the armadillo/beta-catenin superfamily and is implicated in brain and eye development and cancer formation. The protein encoded by this gene promotes the disruption of E-cadherin based adherens junction to favor cell spreading upon stimulation by hepatocyte growth factor. This gene is overexpressed in prostate adenocarcinomas and is associated with decreased expression of tumor suppressor E-cadherin in this tissue. This gene resides in a region of the short arm of chromosome 5 that is deleted in Cri du Chat syndrome.

Synonyms: GT24; NPRAP

Note: Immunogen Sequence Homology: Human: 100%; Dog: 93%; Pig: 93%; Horse: 93%; Bovine: 93%; Rabbit: 93%; Guinea pig: 93%; Zebrafish: 92%; Mouse: 79%

Protein Families: Druggable Genome

Product images:



WB Suggested Anti-CTNND2 Antibody; Titration: 1.0 ug/ml; Positive Control: 721_B Whole Cell