

Product datasheet for **TA338257**

Histidase (HAL) Rabbit Polyclonal Antibody

Product data:

Product Type:	Primary Antibodies
Applications:	IHC, WB
Recommended Dilution:	WB, IHC
Reactivity:	Human
Host:	Rabbit
Isotype:	IgG
Clonality:	Polyclonal
Immunogen:	The immunogen for anti-HAL antibody: synthetic peptide directed towards the N terminal of human HAL. Synthetic peptide located within the following region: INKLQELQVNLVRSHGSGVKGKPLSPERCRMLLALRINVLAAGYSGISLET
Formulation:	Liquid. Purified antibody supplied in 1x PBS buffer with 0.09% (w/v) sodium azide and 2% sucrose. <i>Note that this product is shipped as lyophilized powder to China customers.</i>
Purification:	Affinity Purified
Conjugation:	Unconjugated
Storage:	Store at -20°C as received.
Stability:	Stable for 12 months from date of receipt.
Predicted Protein Size:	72 kDa
Gene Name:	histidine ammonia-lyase
Database Link:	NP_002099 Entrez Gene 3034 Human P42357
Background:	Histidine ammonia-lyase is a cytosolic enzyme catalyzing the first reaction in histidine catabolism, the nonoxidative deamination of L-histidine to trans-urocanic acid. Histidine ammonia-lyase defects cause histidinemia which is characterized by increased histidine and histamine and decreased urocanic acid in body fluids. Several transcript variants encoding different isoforms have been found for this gene. [provided by RefSeq, Apr 2012]
Synonyms:	HIS; HSTD



[View online »](#)

Note: Immunogen Sequence Homology: Rat: 100%; Human: 100%; Mouse: 100%; Bovine: 100%; Rabbit: 100%; Dog: 93%; Pig: 93%; Horse: 93%; Zebrafish: 86%; Guinea pig: 86%

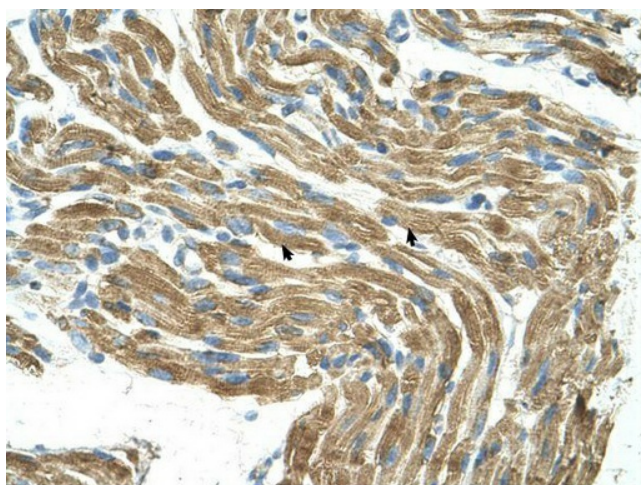
Protein Families: Druggable Genome

Protein Pathways: Histidine metabolism, Metabolic pathways, Nitrogen metabolism

Product images:



WB Suggested Anti-HAL Antibody Titration: 1 ug/ml; Positive Control: 721_B cell lysate



Immunohistochemistry with Fetal liver cell lysate tissue at an antibody concentration of 1.25 ug/ml using anti-HAL antibody