

Product datasheet for **TA337951**

TIM 3 (HAVCR2) Rabbit Polyclonal Antibody

Product data:

| | |
|-------------------------|---|
| Product Type: | Primary Antibodies |
| Applications: | WB |
| Recommended Dilution: | WB |
| Reactivity: | Human |
| Host: | Rabbit |
| Isotype: | IgG |
| Clonality: | Polyclonal |
| Immunogen: | The immunogen for anti-HAVCR2 antibody: synthetic peptide directed towards the N terminal of human HAVCR2. Synthetic peptide located within the following region: MFSHLPFDCVLLLLLLLLLRSSEVEYRAEVGQNAYLPCFYTPAAPGNLVP |
| Formulation: | Liquid. Purified antibody supplied in 1x PBS buffer with 0.09% (w/v) sodium azide and 2% sucrose. <i>Note that this product is shipped as lyophilized powder to China customers.</i> |
| Purification: | Affinity Purified |
| Conjugation: | Unconjugated |
| Storage: | Store at -20°C as received. |
| Stability: | Stable for 12 months from date of receipt. |
| Predicted Protein Size: | 33 kDa |
| Gene Name: | hepatitis A virus cellular receptor 2 |
| Database Link: | NP_116171 Entrez Gene 84868 Human Q8TDQ0 |



[View online »](#)

Background:

The protein encoded by this gene belongs to the immunoglobulin superfamily, and TIM family of proteins. CD4-positive T helper lymphocytes can be divided into types 1 (Th1) and 2 (Th2) on the basis of their cytokine secretion patterns. Th1 cells are involved in cell-mediated immunity to intracellular pathogens and delayed-type hypersensitivity reactions, whereas, Th2 cells are involved in the control of extracellular helminthic infections and the promotion of atopic and allergic diseases. This protein is a Th1-specific cell surface protein that regulates macrophage activation, and inhibits Th1-mediated auto- and alloimmune responses, and promotes immunological tolerance. [provided by RefSeq, Sep 2011]

Synonyms:

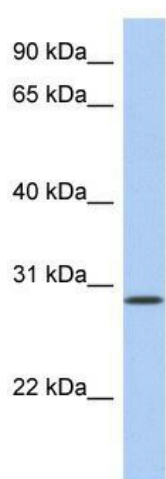
CD366; HAVcr-2; KIM-3; Tim-3; TIM3; TIMD-3; TIMD3

Note:

Immunogen Sequence Homology: Human: 100%; Dog: 79%

Protein Families:

Druggable Genome, Transmembrane

Product images:

WB Suggested Anti-HAVCR2 Antibody Titration:
0.2-1 ug/ml; ELISA Titer: 1: 62500; Positive
Control: OVCAR-3 cell lysate