

## Product datasheet for **TA337752**

### GPR86 (P2RY13) Rabbit Polyclonal Antibody

#### Product data:

Product Type:	Primary Antibodies
Applications:	WB
Recommended Dilution:	WB
Reactivity:	Human
Host:	Rabbit
Isotype:	IgG
Clonality:	Polyclonal
Immunogen:	The immunogen for anti-P2RY13 antibody is: synthetic peptide directed towards the C-terminal region of Human P2RY13. Synthetic peptide located within the following region: YTHSQTNNKTDRCRLQNQLFLIAKETTFLAATNICMDPLIYIFLCKKFTK
Formulation:	Liquid. Purified antibody supplied in 1x PBS buffer with 0.09% (w/v) sodium azide and 2% sucrose. <i>Note that this product is shipped as lyophilized powder to China customers.</i>
Purification:	Affinity Purified
Conjugation:	Unconjugated
Storage:	Store at -20°C as received.
Stability:	Stable for 12 months from date of receipt.
Predicted Protein Size:	41 kDa
Gene Name:	purinergic receptor P2Y13
Database Link:	<a href="#">NP_795713</a> <a href="#">Entrez Gene 53829 Human Q9BPV8</a>
Background:	The product of this gene belongs to the family of G-protein coupled receptors. This family has several receptor subtypes with different pharmacological selectivity, which overlaps in some cases, for various adenosine and uridine nucleotides. This receptor is activated by ADP.
Synonyms:	FKSG77; GPCR1; GPR86; GPR94; P2Y13; SP174
Note:	Immunogen Sequence Homology: Human: 100%; Rat: 93%; Bovine: 93%; Pig: 92%; Guinea pig: 92%; Dog: 86%; Mouse: 86%; Rabbit: 79%; Horse: 77%

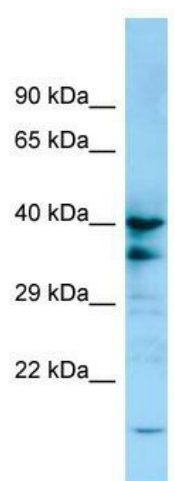


[View online »](#)

Protein Families: Druggable Genome, GPCR, Transmembrane

Protein Pathways: Neuroactive ligand-receptor interaction

### Product images:



WB Suggested Anti-P2RY13 Antibody; Titration:  
1.0 ug/ml; Positive Control: 721\_B Whole Cell