

## Product datasheet for **TA337068**

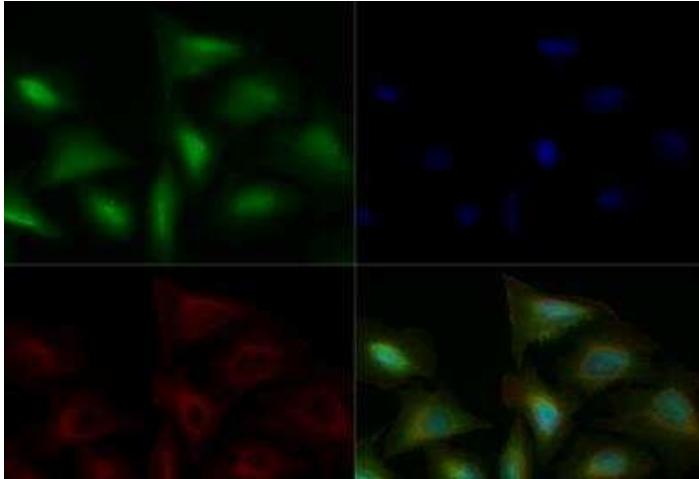
### TLR4 Rabbit Polyclonal Antibody

#### Product data:

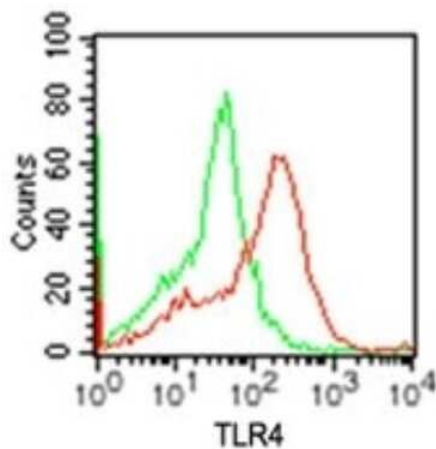
|                       |   |
|-----------------------|---|
| Product Type:         | Primary Antibodies  |
| Applications:         | FC, ICC/IF, IHC, WB   |
| Recommended Dilution: | Immunohistochemistry, Immunohistochemistry-Paraffin: 1:50, Immunocytochemistry/Immunofluorescence: 1:50, Western Blot: 1 - 3 ug/mL, Flow Cytometry: 1 ug / 10 <sup>6</sup> cells, Immunohistochemistry-Frozen: 1:10 - 1:500 |
| Reactivity:           | Human, Mouse  |
| Host:                 | Rabbit  |
| Isotype:              | IgG   |
| Clonality:            | Polyclonal  |
| Immunogen:            | This antibody was developed against a sythetic peptide corresponding to amino acids 420-456 of human TLR4.  |
| Formulation:          | PBS containing 0.05% BSA, 0.05% Sodium Azide. Store at -20C. Avoid freeze-thaw cycles.  |
| Concentration:        | lot specific  |
| Purification:         | Protein G purified  |
| Conjugation:          | Unconjugated  |
| Storage:              | Store at -20°C as received.   |
| Stability:            | Stable for 12 months from date of receipt.  |
| Gene Name:            | toll like receptor 4  |
| Database Link:        | <a href="#">NP_612564</a><br><a href="#">Entrez Gene 21898 Mouse</a> <a href="#">Entrez Gene 7099 Human</a><br><a href="#">O00206</a>   |
| Synonyms:             | ARMD10; CD284; TLR-4; TOLL  |
| Protein Families:     | Druggable Genome, Transmembrane   |
| Protein Pathways:     | Pathogenic Escherichia coli infection, Toll-like receptor signaling pathway   |



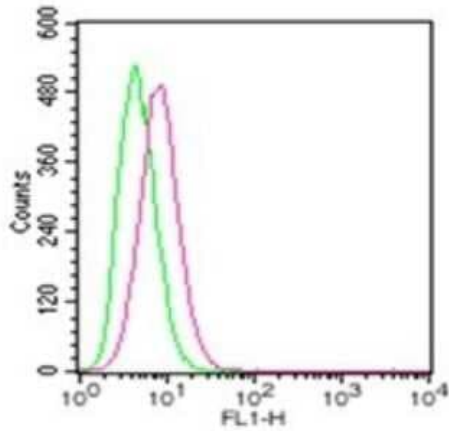
[View online »](#)

**Product images:**

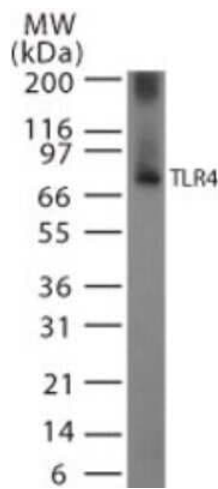
Immunocytochemistry/Immunofluorescence: TLR4 Antibody TA337068 - U2OS cells were fixed for 10 minutes using 10% formalin and then permeabilized for 5 minutes using 1X TBS + 0.5% Triton X-100. The cells were incubated with anti-TLR4 TA337068 at a 1:50 dilution overnight at 4C and detected with an anti-rabbit DyLight 488 (Green) at a 1:500 dilution. Alpha tubulin (DM1A) NB100-690 was used as a co-stain at a 1:1000 dilution and detected with an anti-mouse DyLight 550 (Red) at a 1:500 dilution. Nuclei were counterstained with DAPI (Blue). Cells were imaged using a 40X objective.



Flow Cytometry: TLR4 Antibody TA337068 - Cell surface analysis using TLR4 antibody. Mouse macrophage cells were probed using 1 ug of TLR4 antibody (red) and 1 ug of isotype control antibody (green). This antibody and PE-conjugated secondary were used for this test.



Flow Cytometry: TLR4 Antibody TA337068 - Analysis using the Alexa Fluor (R) 488 conjugate of TA337068. Staining of RAW cells were probed using 2 ug of TLR4 antibody (red) and 2 ug of isotype control antibody (green). Novus's TLR cell surface flow kit (10099K) was used for this test.



Western Blot: TLR4 Antibody TA337068 - Analysis of TLR4 using TLR4 antibody at 2 ug/mL on partial recombinant mouse TLR4 protein.