

Product datasheet for **TA337033**

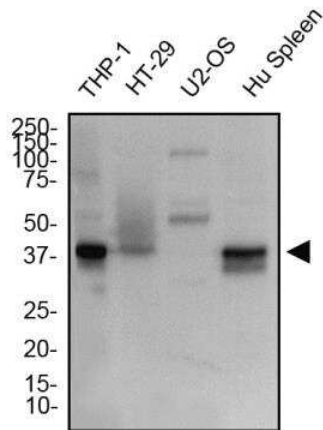
STING (TMEM173) Rabbit Polyclonal Antibody

Product data:

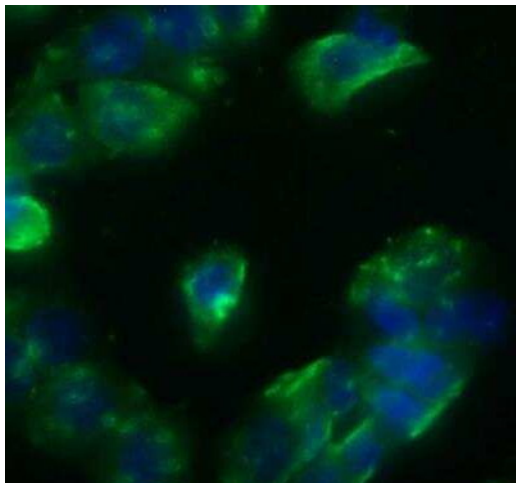
| | |
|-----------------------|-----------------------------------------------------------------------------------------------------------------------------------------------------------------------------------------------------------------------------------------------|
| Product Type: | Primary Antibodies |
| Applications: | ELISA, FC, ICC/IF, IHC, WB |
| Recommended Dilution: | ELISA, Immunohistochemistry-Frozen, Western Blot: 1 - 2 ug/ml, Immunohistochemistry: 1:100 - 1:300, Immunohistochemistry-Paraffin: 1:100 - 1:300, Immunocytochemistry/ Immunofluorescence: 5 - 10 ug/ml, Flow Cytometry: 1-5 ug/million cells |
| Reactivity: | Human, Mouse, Rat, Primate |
| Host: | Rabbit |
| Clonality: | Polyclonal |
| Immunogen: | A portion of amino acids 310-360 of human STING was used as the immunogen. |
| Formulation: | PBS containing 0.05% BSA, 0.05% Sodium Azide. Store at 4C short term. Aliquot and store at -20C long term. Avoid freeze-thaw cycles. |
| Concentration: | lot specific |
| Purification: | Protein A purified |
| Conjugation: | Unconjugated |
| Storage: | Store at -20°C as received. |
| Stability: | Stable for 12 months from date of receipt. |
| Gene Name: | transmembrane protein 173 |
| Database Link: | NP_938023 Entrez Gene 72512 Mouse Entrez Gene 498840 Rat Entrez Gene 340061 Human Q86WV6 |
| Synonyms: | ERIS; hMITA; hSTING; MITA; MPYS; NET23; SAVI; STING |
| Protein Pathways: | Cytosolic DNA-sensing pathway, RIG-I-like receptor signaling pathway |



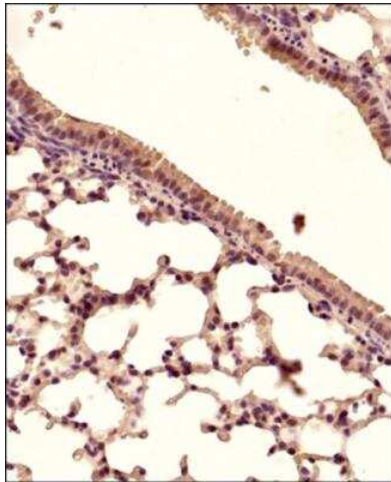
[View online »](#)

Product images:


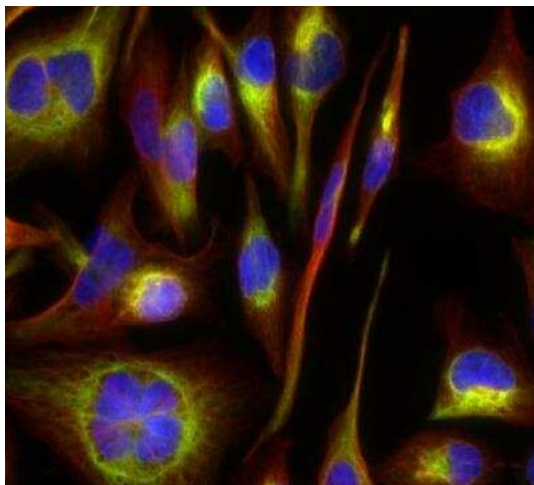
Western Blot: STING/TMEM173 Antibody TA337033 - Total protein from THP-1, HT-29, U2OS cells and human spleen was separated on a 12% gel by SDS-PAGE, transferred to PVDF membrane and blocked in 5% non-fat milk in TBST. The membrane was probed with 2.0 ug/ml STING/TMEM173 Antibody in 1% non-fat milk in TBST and detected with an anti-rabbit HRP secondary antibody using chemiluminescence.



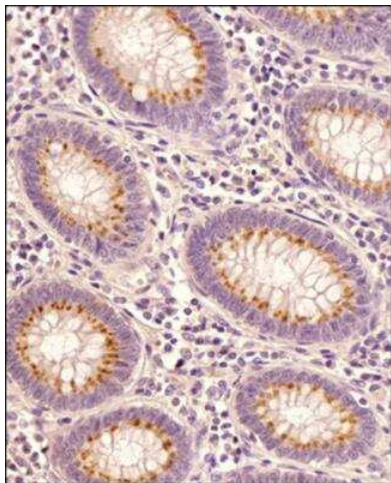
Immunocytochemistry/Immunofluorescence: STING/TMEM173 Antibody TA337033 - HT-29 cells were fixed for 10 minutes using 10% formalin and then permeabilized for 5 minutes using 1X PBS + 0.05% Triton-X100. The cells were incubated with STING/TMEM173 Antibody at 10 ug/ml overnight at 4C and detected with an anti-rabbit Dylight 488 (Green) at a 1:500 dilution. Nuclei were counterstained with DAPI (Blue). Cells were imaged using a 40X objective.



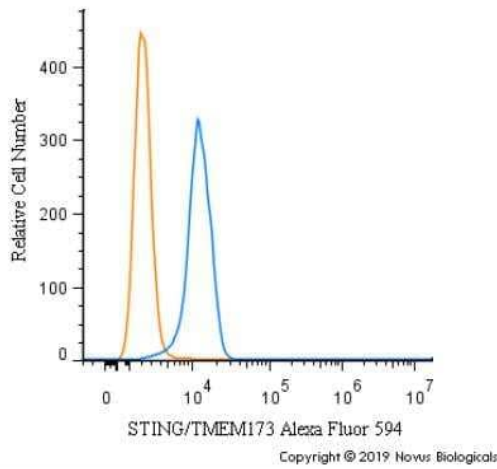
Immunohistochemistry-Paraffin:
STING/TMEM173 Antibody TA337033 - Mouse lung tissue section using STING/TMEM173 Antibody at 1:150 dilution with detection employing HRP-conjugated secondary antibody. The signal was developed using DAB reagent and the nuclei were counterstained with hematoxylin. The antibody generated mainly a cytoplasmic staining in the bronchiolar and alveolar epithelial cells.



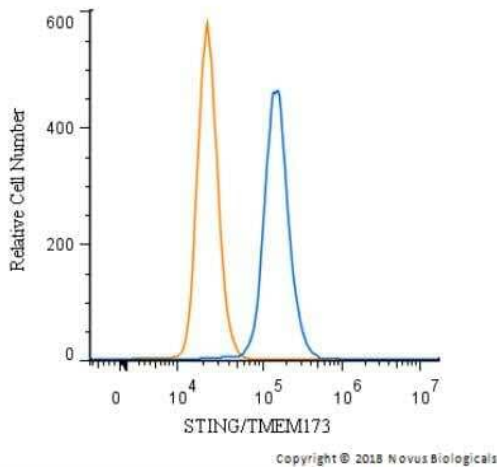
Immunocytochemistry/Immunofluorescence:
STING/TMEM173 Antibody TA337033 - RH-30 cells were fixed for 10 minutes using 10% formalin and then permeabilized for 5 minutes using 1X PBS + 0.05% Triton X-100. The cells were incubated with STING/TMEM173 Antibody at 2 ug/mL overnight at 4C and detected with an anti-rabbit DyLight 488 (Green) at a 1:500 dilution. Alpha Tubulin Antibody (DM1A) (NB100-690) was used as a co-stain at a 1:1000 dilution and detected with an anti-mouse Dylight 550 (Red) at a 1:500 dilution. Nuclei were counterstained with DAPI (Blue). Cells were imaged using a 40X objective.



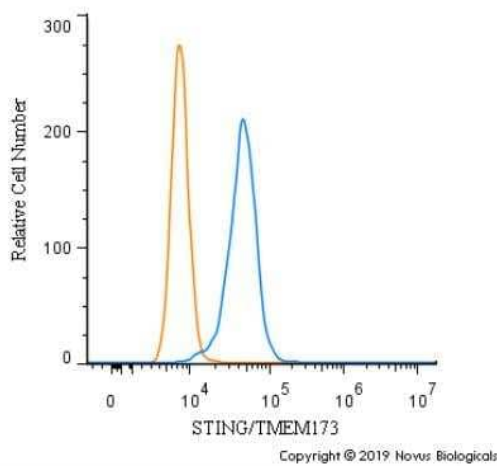
Immunohistochemistry-Paraffin:
STING/TMEM173 Antibody TA337033 - Human colon cancer tissue section using STING/TMEM173 Antibody at 1:100 dilution with detection employing HRP-conjugated secondary antibody. The signal was developed using DAB reagent and the nuclei were counterstained with hematoxylin. The antibody generated very weak cytoplasmic staining in columnar epithelial cells with a very strong signal in the secretory/goblet cells.



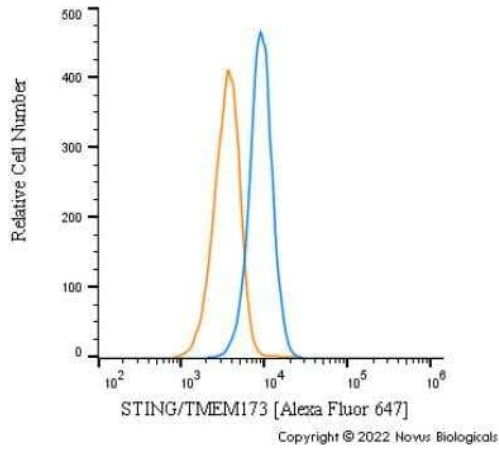
Flow Cytometry: STING/TMEM173 Antibody TA337033 - An intracellular stain was performed on U937 cells with TA337033AF594 (blue) and a matched isotype control (orange). Cells were fixed with 4% PFA and then permeabilized with 0.1% saponin. Cells were incubated in an antibody dilution of 2.5 ug/mL for 30 minutes at room temperature. Both antibodies were conjugated to Alexa Fluor 594.



Flow Cytometry: STING/TMEM173 Antibody TA337033 - An intracellular stain was performed on THP-1 cells with STING/TMEM173 Antibody and a matched isotype control. Cells were fixed with 4% PFA and then permeabilized with 0.1% saponin. Cells were incubated in an antibody dilution of 2.5 ug/mL for 30 minutes at room temperature, followed by Rabbit IgG (H+L) Cross-Adsorbed Secondary Antibody.



Flow Cytometry: STING/TMEM173 Antibody TA337033 - An intracellular stain was performed on RH30 cells with STING/TMEM173 Antibody (blue) and a matched isotype control (orange). Cells were fixed with 4% PFA and then permeabilized with 0.1% saponin. Cells were incubated in an antibody dilution of 2.5 ug/mL for 30 minutes at room temperature, followed by Rabbit IgG (H+L) Cross-Adsorbed Secondary Antibody.



Flow Cytometry: STING/TMEM173 Antibody - BSA Free TA337033 - An intracellular stain was performed on THP-1 cells with STING/TMEM173 Antibody TA337033AF647 (blue) and a matched isotype control NBP2-24891 (orange). Cells were fixed with 4% PFA and then permeabilized with 0.1% saponin. Cells were incubated in an antibody dilution of 2.5 ug/mL for 30 minutes at room temperature. Both antibodies were conjugated to Alexa Fluor 647.