

Product datasheet for **TA337007**

Beta Arrestin 2 (ARRB2) Rabbit Polyclonal Antibody

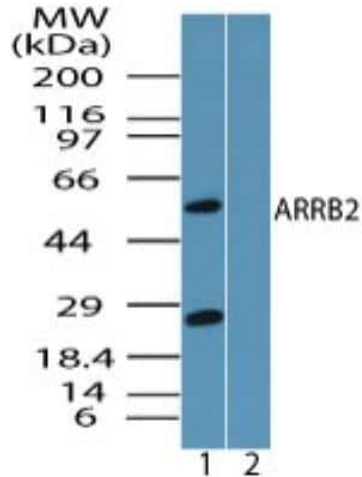
Product data:

Product Type:	Primary Antibodies
Applications:	IHC, Simple Western, WB
Recommended Dilution:	Immunohistochemistry, Simple Western: 1:100, Western Blot: 0.25 - 0.5 ug/mL, Immunohistochemistry-Paraffin: 5 ug/mL
Reactivity:	Human, Mouse, Rat, Bovine, Canine, Equine, Primate
Host:	Rabbit
Clonality:	Polyclonal
Immunogen:	A peptide sequence corresponding to an area between amino acids 1 and 50 of human ARRB2 was used as the immunogen for the antibody, Gen Bank no. gb:ABG47460.1.
Formulation:	PBS, 30% glycerol, 0.1% Sodium Azide. Store at -20C. Avoid freeze-thaw cycles.
Concentration:	lot specific
Purification:	Immunogen affinity purified
Conjugation:	Unconjugated
Storage:	Store at -20°C as received.
Stability:	Stable for 12 months from date of receipt.
Gene Name:	arrestin beta 2
Database Link:	NP_945355 Entrez Gene 25388 Rat Entrez Gene 216869 Mouse Entrez Gene 409 Human P32121
Synonyms:	ARB2; ARR2; BARR2
Protein Families:	Druggable Genome
Protein Pathways:	Chemokine signaling pathway, Endocytosis, MAPK signaling pathway, Olfactory transduction



[View online »](#)

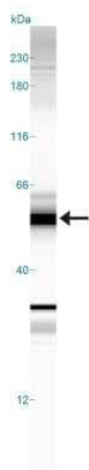
Product images:



Western Blot: beta-Arrestin 2 Antibody TA337007 - Analysis of ARRB2 in HUVEC cell lysate in the 1) absence and 2) presence of immunizing peptide using ARRB2 antibody at 0.25 ug/mL. Goat anti-rabbit Ig HRP secondary antibody and PicoTect ECL substrate solution were used.



Immunohistochemistry-Paraffin: beta-Arrestin 2 Antibody TA337007 - Human thyroid tissue stained with ARRB2 antibody at 5 ug/mL. Staining of formalin-fixed tissues is enhanced by boiling tissue sections in 10 mM sodium citrate buffer, pH 6.0 for 10-20 min followed by cooling at RT for 20 min.



Simple Western: beta-Arrestin 2 Antibody TA337007 - Simple Western lane view shows a specific band for beta Arrestin in 0.5 mg/mL of Jurkat lysate. This experiment was performed under reducing conditions using the 12-230 kDa separation system.