

Product datasheet for **TA336950**

GLI2 Rabbit Polyclonal Antibody

Product data:

Product Type:	Primary Antibodies
Applications:	ICC/IF, IHC
Recommended Dilution:	Immunohistochemistry-Frozen, Immunohistochemistry-Paraffin: 1:200 - 1:300, Immunohistochemistry: 1:200 - 1:300, Immunocytochemistry/ Immunofluorescence: 1:50 - 1:200
Reactivity:	Human, Mouse
Host:	Rabbit
Clonality:	Polyclonal
Immunogen:	A synthetic peptide made to an internal portion of the human Gli2 protein (between residues 300-400) [UniProt P10070]
Formulation:	PBS, 0.05% Sodium Azide. Store at 4C short term. Aliquot and store at -20C long term. Avoid freeze-thaw cycles.
Concentration:	lot specific
Purification:	Immunogen affinity purified
Conjugation:	Unconjugated
Storage:	Store at -20°C as received.
Stability:	Stable for 12 months from date of receipt.
Gene Name:	GLI family zinc finger 2
Database Link:	NP_005261 Entrez Gene 14633 Mouse Entrez Gene 2736 Human P10070



[View online »](#)

Background: Gli2, also known as THP, is a transcription factor which binds DNA through zinc finger motifs. Belonging to the C2H2-Zinc finger type subclass of the Gli family, Gli2 is a mediator of Shh (sonic hedgehog) signaling, a pathway that is aberrantly activated in many types of cancers. Specifically, it has been found that the anti-apoptotic protein BCL-2 is up regulated by Gli2, leading to carcinogenesis. The protein encoded by the Gli2 gene localizes to the cytoplasm and activates patched (Drosophila homolog) gene expression, where it has been thought to play an important role during embryogenesis. Mutations in the Gli2 gene are found in various syndromes, including Pallister-Hall Syndrome, Greig cephalopolysyndactyly syndrome, and preaxial polydactyl type IV. Recently, the interaction between the hedgehog signaling pathway and Gli2 has been implicated in medullary thyroid carcinoma (PMID: 23410206).

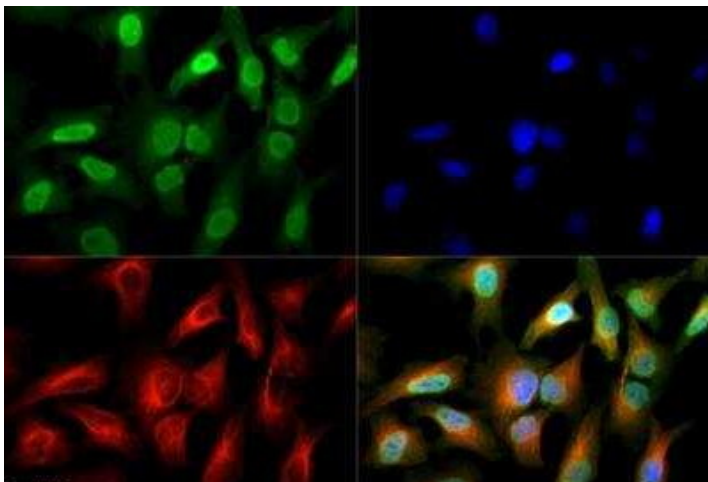
Synonyms: CJS; HPE9; PHS2; THP1; THP2

Note: In Immunocytochemistry/Immunofluorescence, cytoplasmic and nuclear staining was observed in HeLa cells. Prior to immunostaining paraffin tissues, antigen retrieval with sodium citrate buffer (pH 6.0) is recommended.

Protein Families: Adult stem cells, Cancer stem cells, Druggable Genome, Embryonic stem cells, ES Cell Differentiation/IPS

Protein Pathways: Basal cell carcinoma, Hedgehog signaling pathway, Pathways in cancer

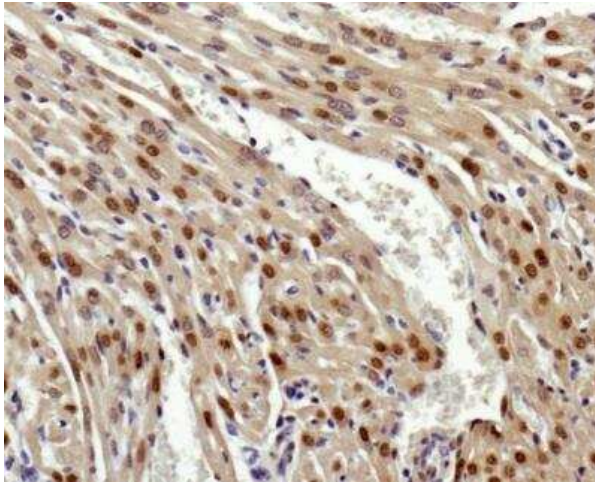
Product images:



Immunocytochemistry/Immunofluorescence: GLI-2 Antibody TA336950 - GLI-2 antibody was tested in HeLa cells with DyLight 488 (green). Nuclei and alpha-tubulin were counterstained with DAPI (blue) and DyLight 550 (red). An antibody dilution of 1:50 was used. Image objective 40x.



Immunocytochemistry/Immunofluorescence: GLI-2 Antibody TA336950 - HeLa cells were fixed in 4% paraformaldehyde for 10 minutes and permeabilized in 0.5% Triton X-100 in PBS for 5 minutes. The cells were incubated with GLI-2 Antibody (TA336950) at 1 ug/ml overnight at 4C and detected with an anti-rabbit Dylight 488 (Green) at a 1:1000 dilution for 60 minutes. Nuclei were counterstained with DAPI (Blue). Cells were imaged using a 100X objective and digitally deconvolved.



Immunohistochemistry: GLI-2 Antibody TA336950 - Analysis of GLI-2 in mouse heart.