

Product datasheet for **TA336943**

AREB6 (ZEB1) Mouse Monoclonal Antibody [Clone ID: 2A8A6]

Product data:

Product Type:	Primary Antibodies
Clone Name:	2A8A6
Applications:	FC, ICC/IF, IHC, WB
Recommended Dilution:	Western Blot: 1: 500 - 1:2000, Flow Cytometry: 1:200 - 1:400, Immunocytochemistry/ Immunofluorescence: 1:100, Immunohistochemistry: 1:200 - 1:1000, Immunohistochemistry- Paraffin: 1:200 - 1:1000
Reactivity:	Human
Host:	Mouse
Isotype:	IgG1
Clonality:	Monoclonal
Immunogen:	Partial recombinant human ZEB1 (between residues 800-1124) expressed in E. coli [Uniprot P37275]
Formulation:	PBS, 0.03% Sodium Azide. Store at 4C short term. Aliquot and store at -20C long term. Avoid freeze-thaw cycles.
Concentration:	lot specific
Purification:	Ammonium sulfate precipitation
Conjugation:	Unconjugated
Storage:	Store at -20°C as received.
Stability:	Stable for 12 months from date of receipt.
Gene Name:	zinc finger E-box binding homeobox 1
Database Link:	NP_110378 Entrez Gene 6935 Human P37275



[View online »](#)

Background:

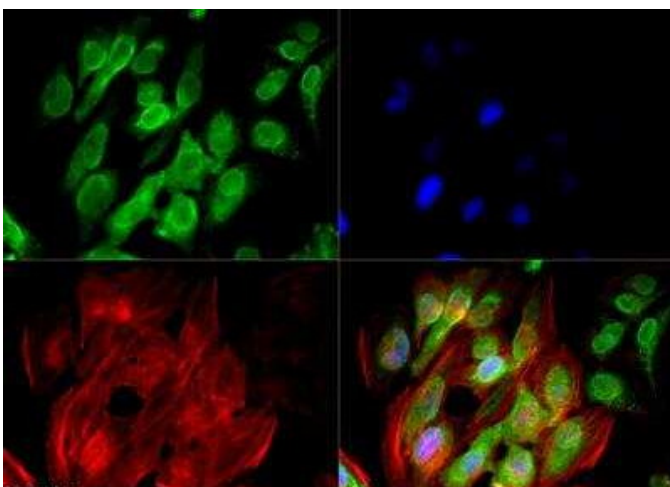
ZEB1 (zinc-finger E-box-binding homeobox 1), also known as TCF8 (transcription factor 8), is a delta-EF1/ZFH-1 C2H2-type zinc finger that bears seven C2H2-type zinc fingers and one homeobox DNA-binding domain. ZEB1 is a transcriptional repressor of interleukin-2 (IL-2). Mutations in the ZEB1 gene are associated with posterior corneal dystrophy type 3 (PPC3) a rare disorder characterized by metaplasia and overgrowth of corneal endothelial cells. ZEB1 appears to be critical to epithelial to mesenchymal transitions (EMT) during development and cancer metastasis. As a transcription factor involved in EMT, ZEB1 promotes EMT by repressing genes associated with the epithelial phenotype and activates genes associated with the mesenchymal phenotype.

Synonyms:

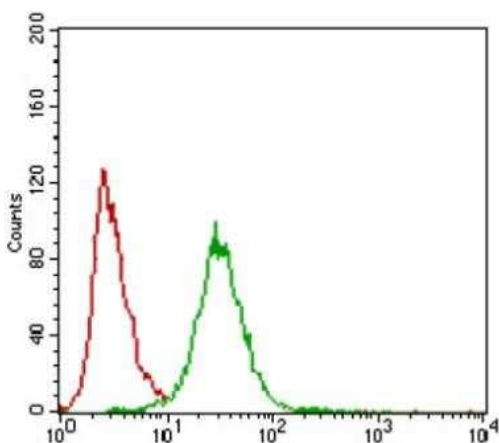
AREB6; BZP; DELTAEF1; FECD6; NIL2A; PPCD3; TCF8; ZFHEP; ZFH1A

Protein Families:

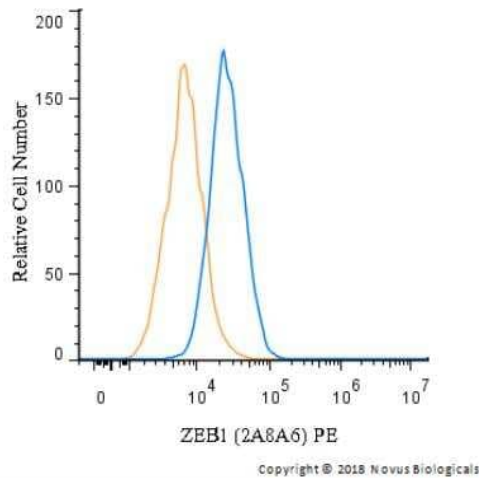
Transcription Factors

Product images:


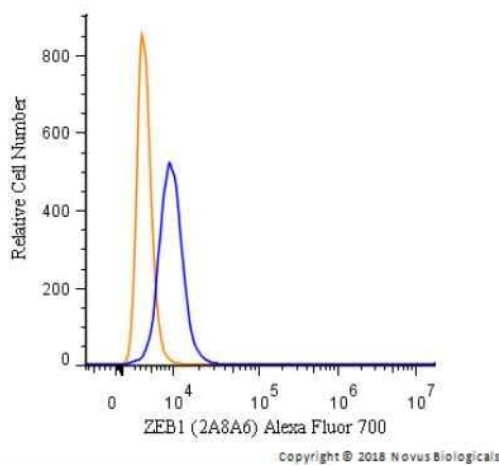
Immunocytochemistry/Immunofluorescence: ZEB1 Antibody (2A8A6) TA336943 - ZEB1 antibody was tested in HeLa cells with DyLight 488 (green). Nuclei and alpha-tubulin were counterstained with DAPI (blue) and DyLight 550 (red).



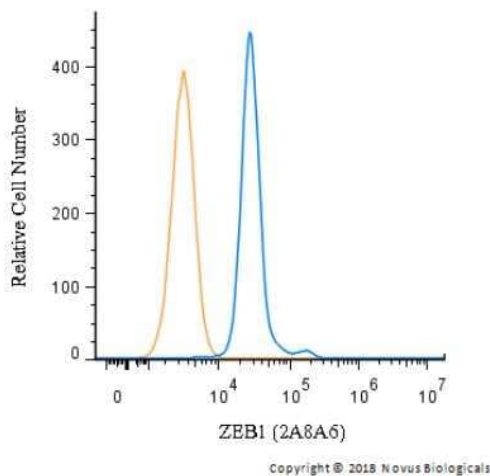
Flow Cytometry: ZEB1 Antibody (2A8A6) TA336943 - Flow cytometric analysis of HeLa cells using ZEB1 mouse mAb (green) and negative control (red).



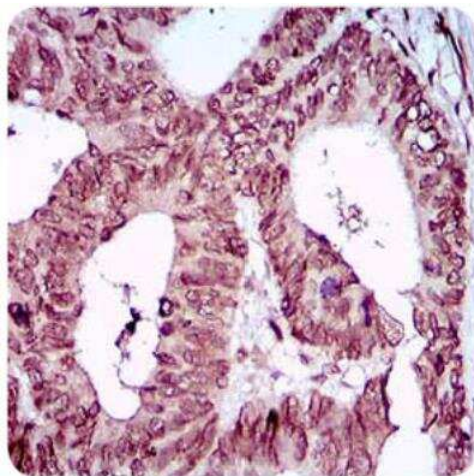
Flow Cytometry: ZEB1 Antibody (2A8A6) TA336943 - An intracellular stain was performed on with A549 cells with ZEB1 Antibody TA336943PE and a matched isotype control (orange). Cells were fixed with 4% PFA and then permeabilized with 0.1% saponin. Cells were incubated in an antibody dilution of 5 ug/mL for 30 minutes at room temperature. Both antibodies were conjugated to phycoerythrin.



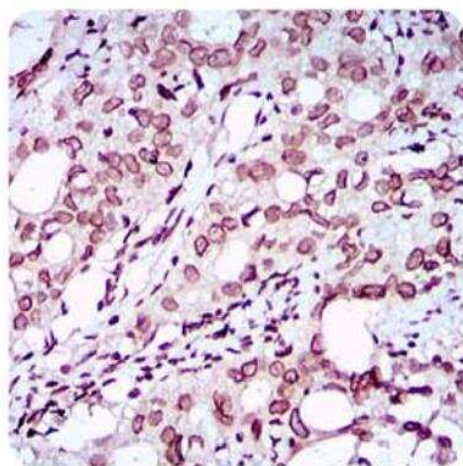
Flow Cytometry: ZEB1 Antibody (2A8A6) TA336943 - An intracellular stain was performed on U-87 cells with ZEB1 [2A8A6] Antibody TA336943AF700 (blue) and a matched isotype control (orange). Cells were fixed with 4% PFA and then permeabilized with 0.1% saponin. Cells were incubated in an antibody dilution of 5 ug/mL for 30 minutes at room temperature. Both antibodies were conjugated to Alexa Fluor 700.



Flow Cytometry: ZEB1 Antibody (2A8A6) TA336943 - An intracellular stain was performed on Jurkat with ZEB1 Antibody (2A8A6) TA336943 and a matched isotype control. Cells were fixed with 4% PFA and then permeabilized with 0.1% saponin. Cells were incubated in an antibody dilution of 1 ug/mL for 30 minutes at room temperature, followed by Mouse F(ab)₂ IgG (H+L) PE-conjugated Antibody (R&D Systems, F0102B)



Immunohistochemistry: ZEB1 Antibody (2A8A6) TA336943 - IHC analysis of paraffin-embedded human rectum cancer tissues with DAB staining.



Immunohistochemistry: ZEB1 Antibody (2A8A6) TA336943 - IHC analysis of paraffin-embedded human cervical cancer tissues with DAB staining.