

## Product datasheet for **TA336940**

### **EPCAM Mouse Monoclonal Antibody [Clone ID: 60N5D8]**

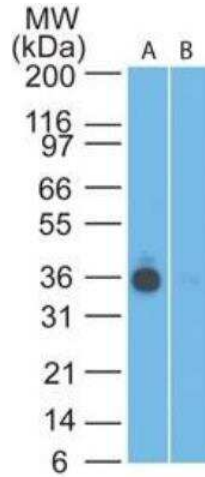
#### **Product data:**

<b>Product Type:</b>	Primary Antibodies
<b>Clone Name:</b>	60N5D8
<b>Applications:</b>	FC, IHC, WB
<b>Recommended Dilution:</b>	Immunohistochemistry: 1:10-1:500, Western Blot: 2-5 ug/ml, Immunohistochemistry-Paraffin: 1:200-1:400, Flow Cytometry: 0.2-1 ug/10 <sup>6</sup> cells
<b>Reactivity:</b>	Human
<b>Host:</b>	Mouse
<b>Isotype:</b>	IgG2b, kappa
<b>Clonality:</b>	Monoclonal
<b>Immunogen:</b>	Within the range of amino acids 289-335 were used as the immunogen for the EpCAM antibody.
<b>Formulation:</b>	PBS containing 0.05% BSA, 0.05% Sodium Azide. Store at 4C short term. Aliquot and store at -20C long term. Avoid freeze-thaw cycles.
<b>Concentration:</b>	lot specific
<b>Purification:</b>	Protein G purified
<b>Conjugation:</b>	Unconjugated
<b>Storage:</b>	Store at -20°C as received.
<b>Stability:</b>	Stable for 12 months from date of receipt.
<b>Gene Name:</b>	epithelial cell adhesion molecule
<b>Database Link:</b>	<a href="#">NP_002345</a> <a href="#">Entrez Gene 4072 Human P16422</a>
<b>Synonyms:</b>	4; DIAR5; EGP-2; EGP40; EGP314; ESA; HNPCC8; KS1; KSA; M4S1; MIC18; MK-1; TACSTD1; TROP1
<b>Protein Families:</b>	ES Cell Differentiation/IPS, Transmembrane

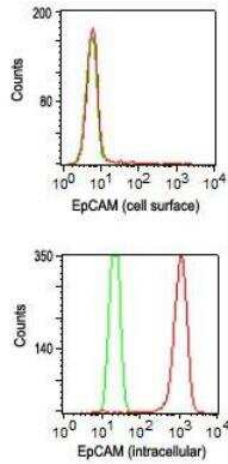


[View online »](#)

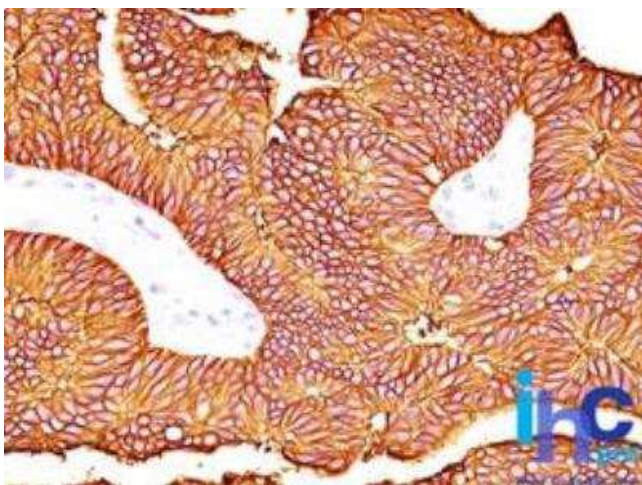
**Product images:**



Western Blot: EpCAM/TROP1 Antibody (60N5D8) TA336940 - Analysis of EpCAM in HT-29 lysate in the (A) absence and (B) presence of immunizing peptide using EpCAM antibody at 2  $\mu\text{g}/\text{ml}$ . Goat anti-mouse Ig HRP secondary antibody and PicoTect ECL substrate solution were used for this test.



Flow Cytometry: EpCAM/TROP1 Antibody (60N5D8) TA336940 - Analysis of HT-29 cells using EpCAM antibody at 0.2  $\mu\text{g}/10^6$  cells. this antibody was used for this test. Top picture shows no cell surface staining seen, bottom shows intracellular staining of EpCAM (red represents EpCAM antibody and green represents isotype control).



Immunohistochemistry-Paraffin: EpCAM/TROP1 Antibody (60N5D8) TA336940 - FFPE human colon stained with EpCAM antibody (1:200), peroxidase-conjugate and DAB chromogen.